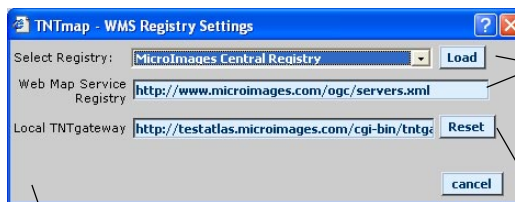
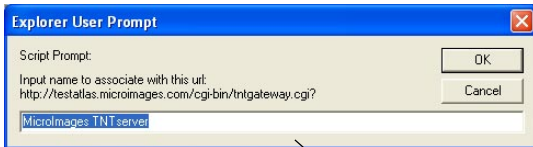


TNTmap

Browsing and Selecting WMS Layers

TNTmap is a Web Map Service (WMS) compliant browser with two parts: TNTmap Builder and TNTmap Viewer. TNTmap Builder lets you choose layers to display from any WMS site for display in TNTmap Viewer, Google Earth, or World Wind. TNTmap is automatically installed with a TNTserver but can also be acquired and updated separately and used without cost. You can make this TNTmap available to your clients to run as a browser plug-in or to be downloaded and installed. TNTmap is in a dynamic phase of software development; it is currently a work in progress, which means it is improving from day to day.

Save URL: saves the entered URL and an associated name to ini.xml. The URLs saved here are combined with those from the selected registry to populate the server list.

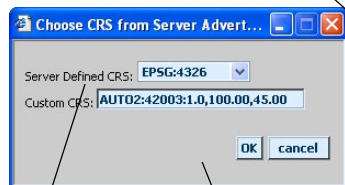


Set Registry Source: an XML registry file that lists a number of WMSs found by MicroImages to have useful geodata layers. You can construct your own list and use it by typing in the url where it resides.

Location of the TNTgateway program for communication with TNTserver.

Save As TNTmap/Google Earth/WorldWind: opens TNTmap Save View window so you can provide a name and description of your choice.

List of countries plus global and user defined extents. Selecting a country zooms the locator view to its extents.



EPSG or other Coordinate Reference System code

Stop WMS GetCapabilities Request

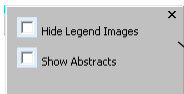
Use locator extents: uses the extents of the image showing in the locator to define the extents for the view.

Zoom in and out buttons for the locator image.

Reload WMS Capabilities from Server

Locator: extents of listed layer beneath cursor are shown by a red box and the currently set extents are shown by a cyan box over this global image.

Adjust Choices Display



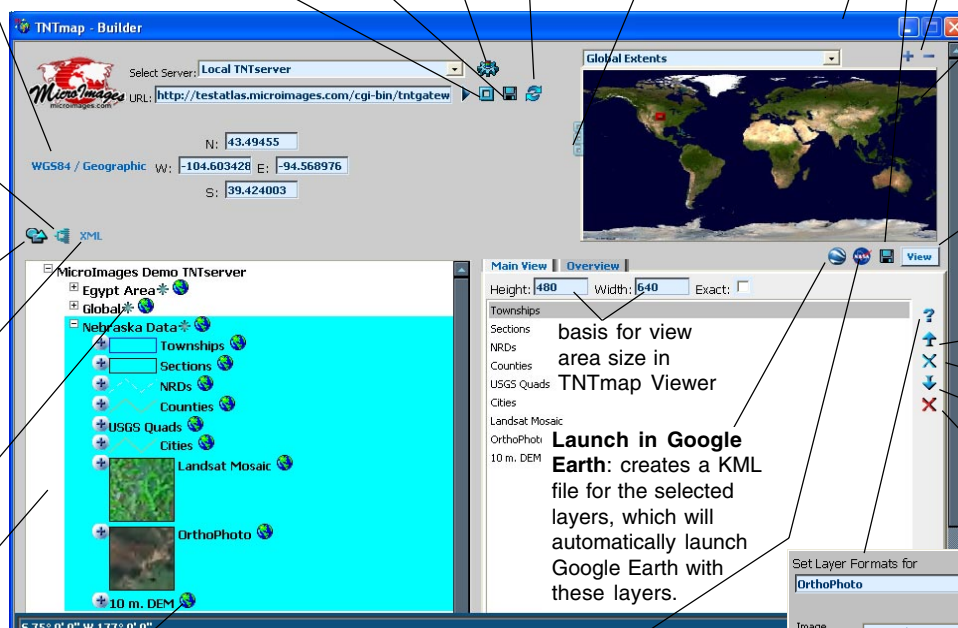
Set Default Image Properties for This Server: opens the same window opened by the Change Layer Properties button.

View Server's Capabilities

Source XML: opens XML file.

Render As Group: sends all selected layers as a single image.

layers available from selected server (layers highlighted in cyan have been selected for viewing)



basis for view area size in TNTmap Viewer

Launch in Google Earth: creates a KML file for the selected layers, which will automatically launch Google Earth with these layers.

Opens TNTmap Viewer with selected layers displayed.

Move layer up.
Delete layer.
Move layer down.
Delete all layers.

Clicking on globe for group or layer sets extents for TNTmap Viewer.

Change Layer Properties: lets you choose between image formats (jpg, jp2, png, png Color Palette, png True Color, svg+xml), set IE filters (remove white, remove black, enable 24-bit PNGs, and engrave (relief), set percent opacity (from 10% to opaque), and set the format for information requests.