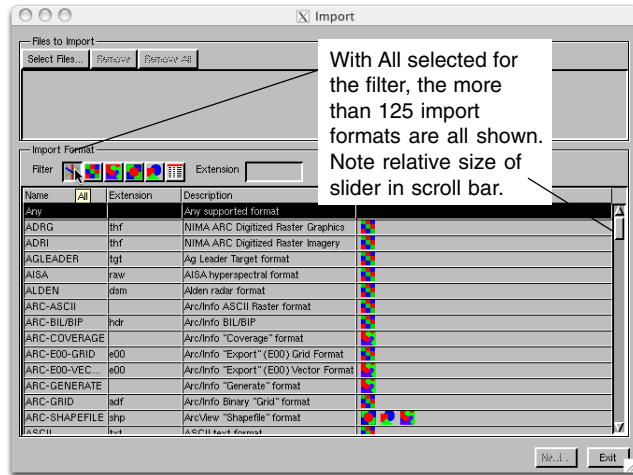


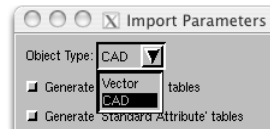
# Import

# Selecting Format First

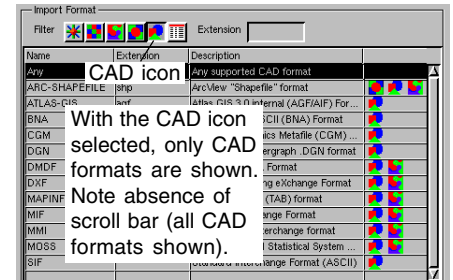
TNTmips' Import and Export processes support hundreds of external raster, vector, shape, CAD, TIN, and database formats. Additionally, many popular file formats are supported for direct use in the TNT products without the need for import, such as Autodesk's DWG files (\*.dwg) and Drawing Exchange Files (\*.dxf), MicroStation/Intergraph DGN files (\*.dgn), JPEG2000 files (\*.jp2), MrSID files (\*.sid), and shapefiles (\*.shp). See the back of the color plate entitled *System: AutoOpen External Geodata Files* for a complete list of formats supported for direct use.



TNTmips' Import process lets you approach file and format selection from two directions: you can first pick the file and let the process determine the format or you can select the format, which will determine the data type (raster, vector, CAD, database) and limit the files you can select for import. The first approach is discussed on the companion color plate entitled *Import: Selecting File First for Import*. The latter approach is discussed further here. If you click on any of the specific data type icons (Raster, Vector, CAD,

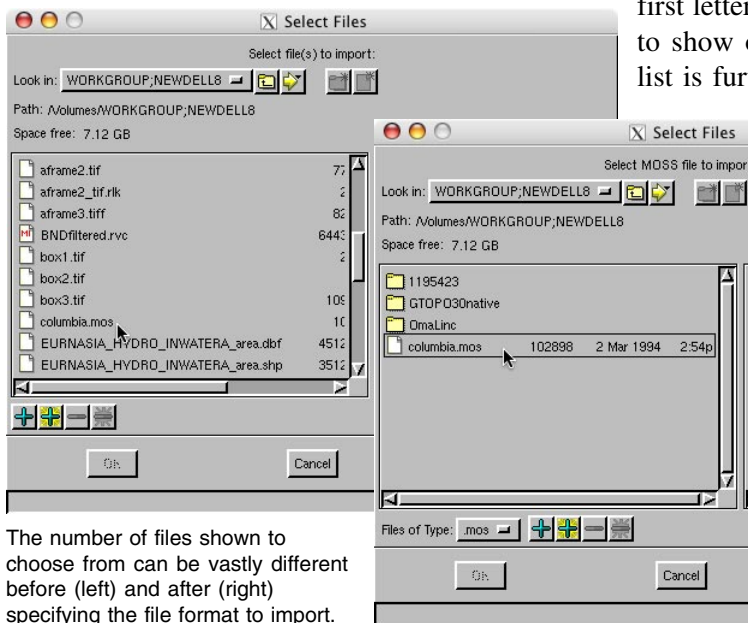


or Database, not All), the list of available file formats is reduced to reflect your choice. Selecting a data type icon before choosing a file format is recommended. In addition to shortening the list, it will set up the object type to be created, which can be easy to overlook, on the window that opens when you press the Next button for files that can be imported as vector or CAD.



Choosing the file format before you browse and select the file to import gives you the benefit of the Import process's selection filters. To help you find the format of interest, you can sort the Name, Extension, and Description columns of the format list by left-clicking on the column heading. Once a file format is selected, only files in that format are shown in the Select Files window after you click on the Select Files button.

Another way to choose the file format is to enter the extension if you know it in the field provided. When you type the first letter of an extension, the list of formats immediately decreases to show only those that contain that letter in the extension. This list is further refined as you continue to enter the extension. Once you enter the three-letter extension, you are usually left with a single entry. Some extensions are used by multiple formats, such as .img, and you will need to know the format or select the file first to let the import process decide on a format.



The number of files shown to choose from can be vastly different before (left) and after (right) specifying the file format to import.

Some file formats can be imported as vector or CAD objects. If you click on Select and choose a file in one of these formats without first clicking on the vector or CAD data type icon, you specify the desired object type in the Import Parameters window that opens after you click on the Next button. Be sure to check that the object type set is the object type you want. The default object type in the Import Parameters window will be the same as the first object type icon for the format shown in the object type column of the Import window.