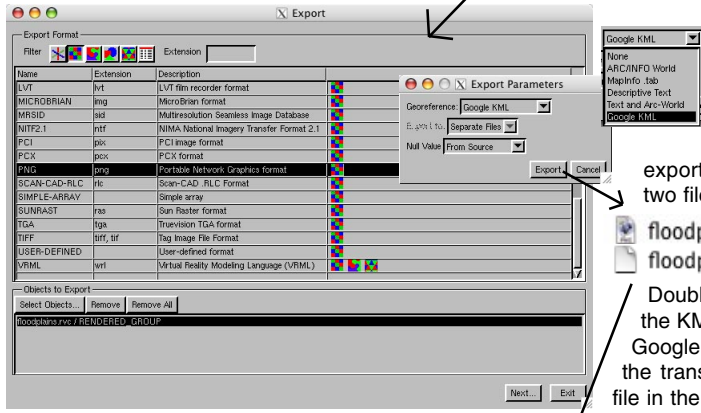
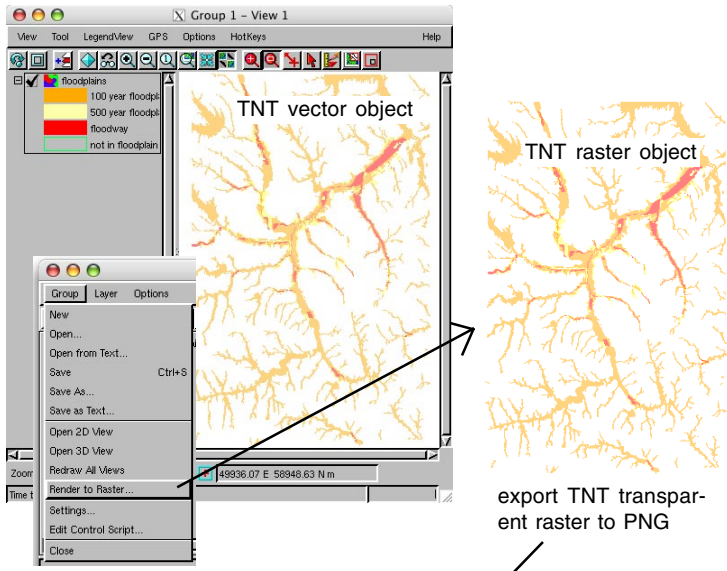
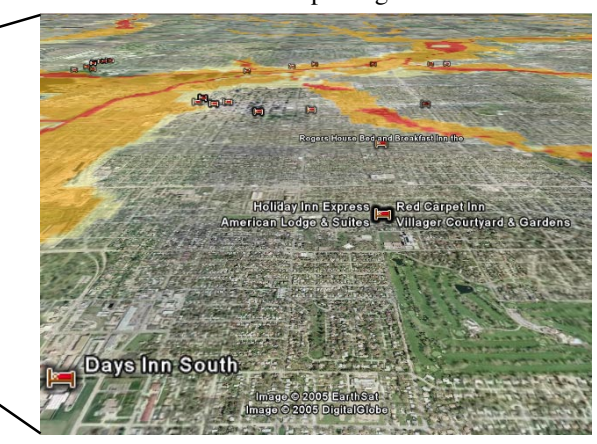
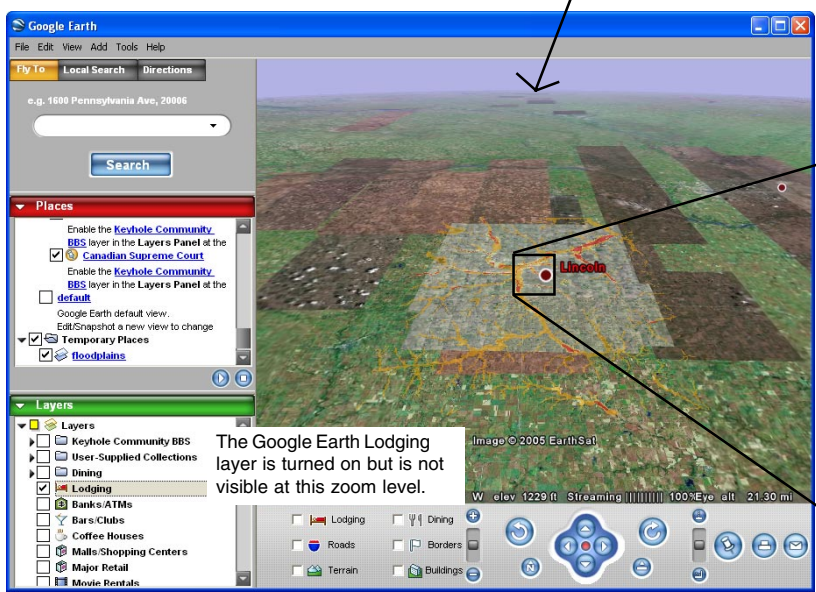


# Export

# Rasters for Google Earth



export produces two files  
 floodplains.png  
 floodplains.kml  
 Double-clicking on the KML file opens Google Earth with the transparent PNG file in the correct geoposition.



TNT-derived floodplains overlay and Google Earth Lodging layer over Google Earth image

Google Earth permits the selection of local raster files as overlays for local “flying.” Any of the various types of geodata objects prepared in TNTmips and TNTedit can be used to create these raster overlays for Google Earth. These rasters must be in GIF (\*.gif), TIFF (\*.tif), PNG (\*.png), or JPEG (\*.jpg) format and be accompanied by a Keyhole Markup Language (\*.kml) header file in the same directory with a matching name. The KML file contains the positional information and other data Google Earth needs to use the raster as a local layer.

Vector, CAD, shape, and other TNT objects can also be added as overlays by converting them to one of these four raster types. Using PNG is recommended since it has transparency, compression, and can be used as 8-bit composite color or 32-bit true color RGBalpha. Geometric objects, pin maps, or other content converted to a PNG file will contain the geometric elements (for example, styled points, lines, and/or polygons) as shown in this illustration while the rest of the PNG raster will be transparent. If your polygon elements or components of your symbol use partially transparent colors, they will retain this partial transparency as illustrated by the floodplain polygons.

Any TNT raster object can be exported with an optional, co-named \*.kml header file. Google may add new formats to the accepted list. As a result, this export option can be selected for any of the many TNT raster export formats, for example JPEG2000 compressed raster (.jp2), MrSID (.sid)... Other software may also adopt this KML file as a means to provide the same geoposition information for other formats similar to the general use of ARC/INFO world and MapInfo TAB files. For these reasons, TNT’s Export process permits the creation of these auxiliary files for any exported raster format.

The only coordinate reference system used at this time by Google Earth is WGS84 latitude and longitude in decimal degrees with an optional altitude above mean sea level. Plan ahead and create all your different types of objects in this system if Google Earth is the target or convert them later before exporting.