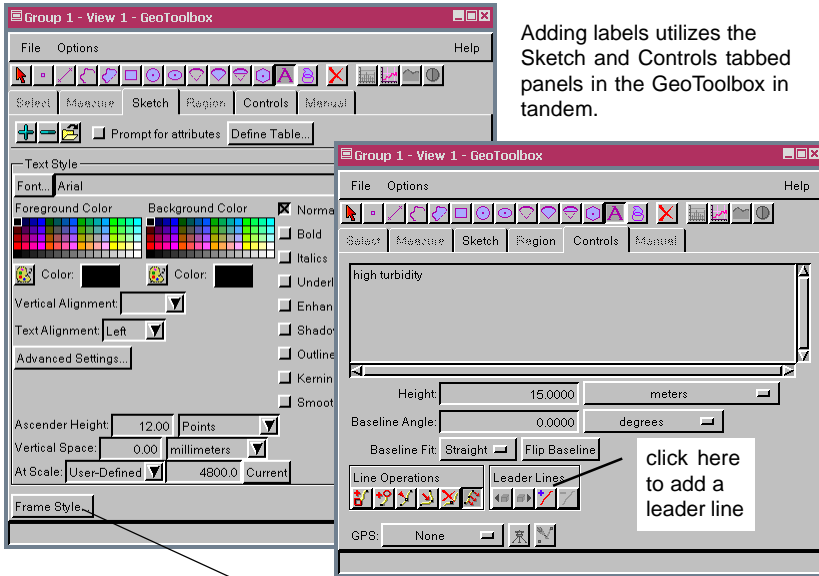


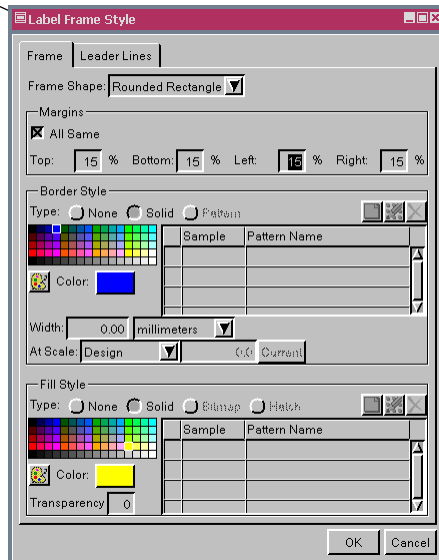
Enhanced Sketch Annotation



Adding labels utilizes the Sketch and Controls tabbed panels in the GeoToolbox in tandem.

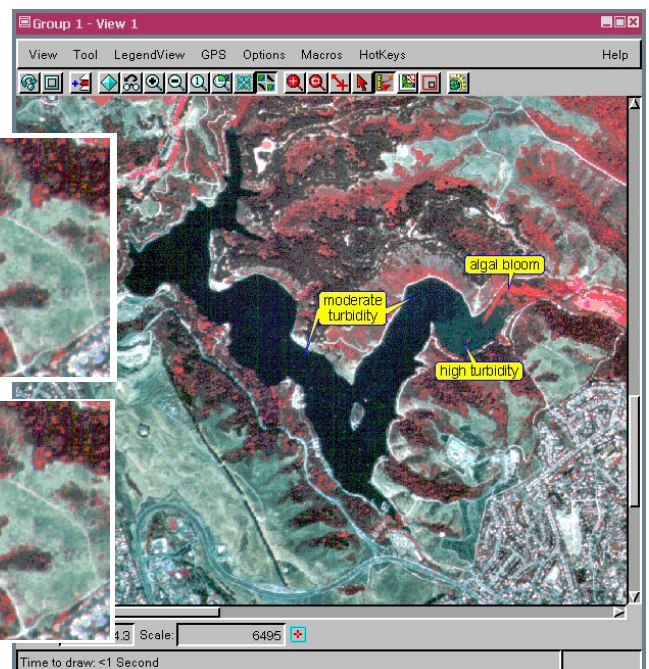
Sketch layers are CAD format objects that can be created or added to using the GeoToolbox in TNT-atlas or any TNT process with a View window. Inserting labels, frames, and leaders in sketch layers now involves the addition of only a single text element with frame and leader styles set rather than separate text, ellipse (or box or circle), and leader line elements. You can either sketch the elements you want to annotate so you can assign attributes to your sketch elements before labeling or you can simply annotate what you see on the screen as illustrated. Label frames let you set off the annotation text more distinctly than choosing enhanced text so the label is not lost in the background. Label leader lines let you associate labels with features from which they are removed. A single label may have multiple leader lines as shown for one of the three labels in the example below.

You specify label font, color, size, and style, and access frame parameters on the Sketch tabbed panel (above left). Text entry and addition of leader lines are handled from the Controls tabbed panel (above right). The frame shape, margins, and colors and leader line style are set in the Label Frame Style window (right), which is opened by clicking on the Frame Style button at the bottom of the Sketch panel in the GeoToolbox. Addition and placement of leader lines is initiated by clicking on the Add Segment icon in the Leader Lines panel of the Controls tabbed panel.



Labels are added to a sketch layer using the Text tool in the GeoToolbox. The label and frame style are set on the Sketch tabbed panel and the text is entered on the Controls panel. Leader lines are also added from the Controls tabbed panel and are interactively sized and positioned in the View window. Leader lines can be simple line segments or the triangular leaders illustrated (see the V6.9 color plate entitled *Label Frames and Leader Lines*).

Triangular leader lines use the colors specified for the frame while linear leaders have a color and width specified on the Leader Lines tabbed panel of the Label Frame Style window. All the leader lines illustrated are straight, but vertices can be inserted and dragged to accommodate labeling as necessary.



The upper illustration at the near right shows the label as the text is added while the lower illustration shows the leader line being added. The label position and/or angle can be changed in the View by dragging when the text baseline is the secondary tool color (blue in the illustration) and the cursor is the 4-point arrow or right hand shape, respectively. The leader line is positioned by dragging from the label to the position desired for the far end after clicking on the Add Segment icon. You can switch between editing the label position/angle and editing the leader line using the Next and Previous icons in the Leader Lines panel.