

Coordinate Reference System Window

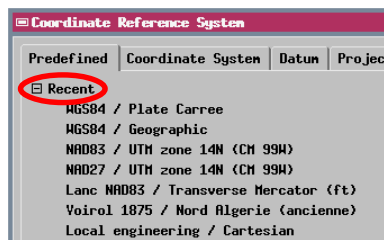
The Coordinate Reference System window is used throughout the TNT products to let you set the georeference parameters for your geospatial data. For example, you are presented with this window when you need to specify the Coordinate Reference System to be used in georeferencing a spatial object, importing certain types of

external files, or reprojecting a geospatial object. You can use the Coordinate Reference System window to select from among the hundreds of predefined Coordinate Reference Systems and Coordinate Systems provided with the TNT products or to define and save any number of custom Coordinate Reference Systems.

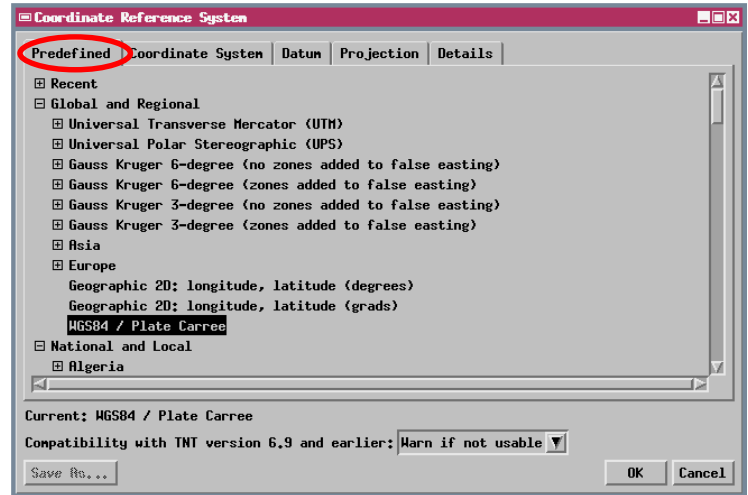
Predefined Panel

The controls on the Coordinate Reference System window are organized on tabbed panels. The Predefined panel is shown by default when you open the window. This panel presents a hierarchical listing of predefined Coordinate Reference Systems (Coordinate System plus datum) that can be selected in a single step, as well as several globally-applicable Coordinate Systems (CS) such as Universal Transverse Mercator that can be paired with any available datum to form a Coordinate Reference System (CRS) appropriate for any specific area. Detailed discussions of the use of the Predefined panel can be found in the color plates entitled *Predefined Coordinate Reference Systems* and *Predefined Coordinate Reference Systems Requiring Datum Selection*.

After you have selected one or more CRSs in any TNT process, a

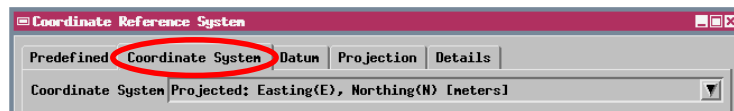


Recent grouping appears at the top of the Predefined panel. For your convenience, this grouping lists the last ten CRSs that you have selected in any TNT process, allowing you to select any of them in one

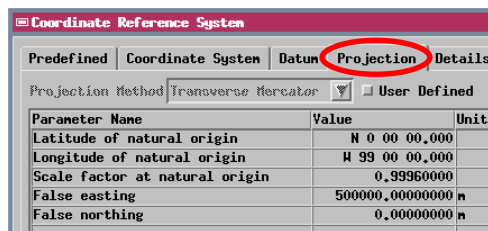


step. The CRS set as “Current” when the window is opened is always listed at the top of the Recent grouping. This current CRS will be the one in use in the process in which you open the Coordinate Reference System window (derived from georeferenced data selected for the process) or the default WGS84 / Geographic.

Coordinate System, Datum, and Projection Panels



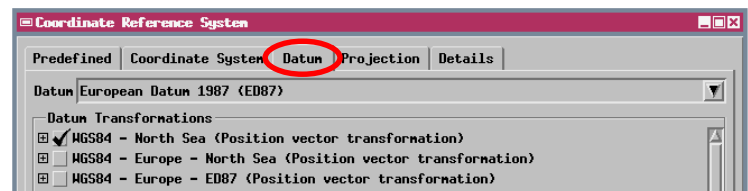
In routine use, when you have selected a predefined CRS or CS from the Predefined panel, you do not need to use the Coordinate System or Projection tabbed panels. The controls on these panels in these cases merely show the parameters associated with your predefined selection. However, in cases where no predefined selection matches your spatial referencing parameters, you can use the controls on these



panels to select the appropriate CS and projection as you proceed to set up a custom CRS. For fur-

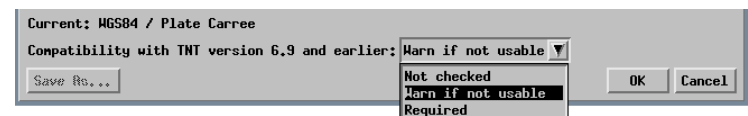
ther information see the color plate entitled *Custom Coordinate Reference System Setup*.

The Datum menu selection on the Datum panel is set automatically when you select a complete predefined CRS on the Predefined panel. When you select a predefined global CS requiring datum selection, or when you are setting up a custom CRS, you can use the Datum menu to select from the hundreds of available datums. When a datum has been selected by any means, you can use the Datum Transformations pane on this panel to select specific transformations directly between different datums (if available). For more information see the color plate entitled *Predefined Coordinate Systems Requiring Datum Selection*.



Control on Backward-Compatibility

A menu at the bottom of the Coordinate Reference System window allows you to set whether and how to check for compatibility of the selected CRS with version 6.9 of the TNT products. You can choose not to check for compatibility, to provide a warning every time a selected CRS is not compatible but still allow its selection



(the default option), or to require selection or creation of a backward-compatible CRS.