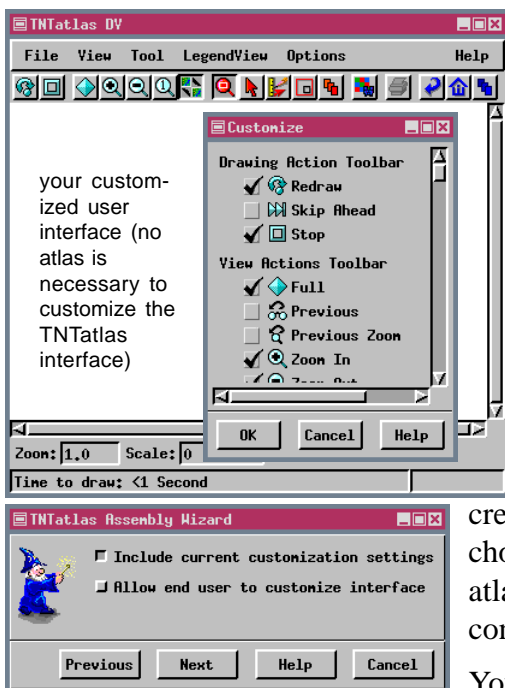


Providing a Customized Interface for TNTAtlas/X



your customized user interface (no atlas is necessary to customize the TNTAtlas interface)

Once you have customized your own version of TNTAtlas/X, you can elect to transfer those customization settings to an atlas prepared by the TNTAtlas Assembly Wizard. The TNTAtlas Assembly Wizard uses the customization settings saved with that version of TNTmips. To create your window customization settings, you just need to run TNTAtlas/X—you do not need to open an atlas. Your customization settings are automatically saved when you click OK in the Customize window.



TNTAtlas /X detects whether you have opened an atlas with HyperIndex links and adds the HyperIndex Navigator and associated icons if links are present. These icons do not appear for a single layout atlas, so the removal of these icons by customization is not necessary.

You may want to use the same customization settings for all the atlases you create or you may find different atlases should have different icons and menu choices available. If you want to use the customization settings from an earlier atlas, replace the .cst file created by the Wizard with one that has the desired configuration and has the same name as the file distributed by the Wizard.

You can also choose whether the atlas user has the ability to customize the interface. You may think your customization provides all the tools your atlas users will need and they are likely to create problems if given the ability to customize. Or, you may want to give them the ability to remove icons and menu choices they do not use, add back some of the functionality you removed, or create their own Macro and Tool Scripts. If you elect not to let your atlas users customize the interface, Customize will not appear on the Options menu when the atlas is opened.

Link-Sensitive Cursor with Navigator Tool



The mouse cursor changes shape when the HyperIndex Navigator tool is active and over an index area in the TNT products. You get the right hand cursor when over an index area and the left arrow cursor when you are not. The right hand cursor differs between the X server products  and TNTAtlas for Windows .

