

Geologic Map of the Granite Gulch Study Area, Inyo County, California

CartoScripts were used to style all of the Structural Symbols (line and point symbols) on the map and in the legend (except for the map unit contact lines, which use standard line patterns).

Map composed in and printed from TNTmips V6.7.

Structural Symbols

Contacts

- exposed or well-located
- approximately located
- concealed beneath Quaternary deposits

Dip-slip Faults

- exposed or well-located
- approximately located
- concealed

Folds

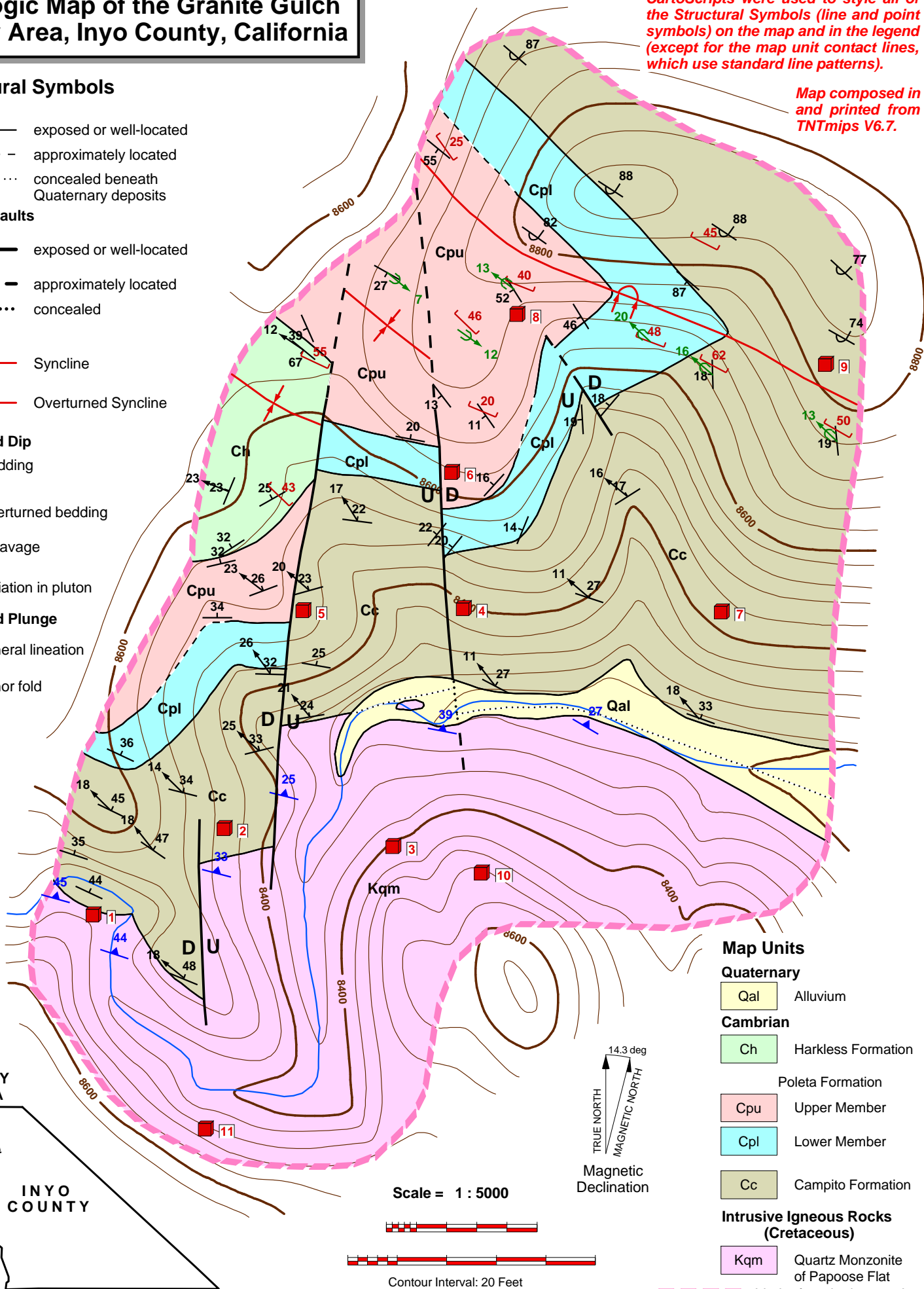
- Syncline
- Overturned Syncline

Strike and Dip

- Bedding
- Overturned bedding
- Cleavage
- Foliation in pluton

Trend and Plunge

- Mineral lineation
- Minor fold



STUDY AREA

INYO COUNTY

Scale = 1 : 5000



Contour Interval: 20 Feet

14.3 deg
TRUE NORTH
MAGNETIC NORTH
Magnetic Declination

Map Units

Quaternary

Qal Alluvium

Cambrian

Ch Harkless Formation

Poleta Formation

Cpu Upper Member

Cpl Lower Member

Cc Campito Formation

Intrusive Igneous Rocks (Cretaceous)

Kqm Quartz Monzonite of Papoose Flat

Limit of geologic mapping