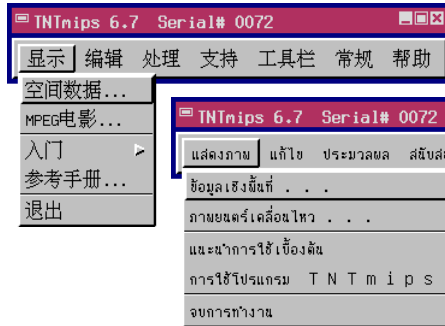


# TrueType Fonts for Localization

**DID YOU KNOW** ... you can use TrueType fonts for any supported language and to create symbols?

## What TrueType Fonts Give You

- Use with localization package for interface in any language
- Download fonts from Internet
- Print at any size without quality degradation from scaling

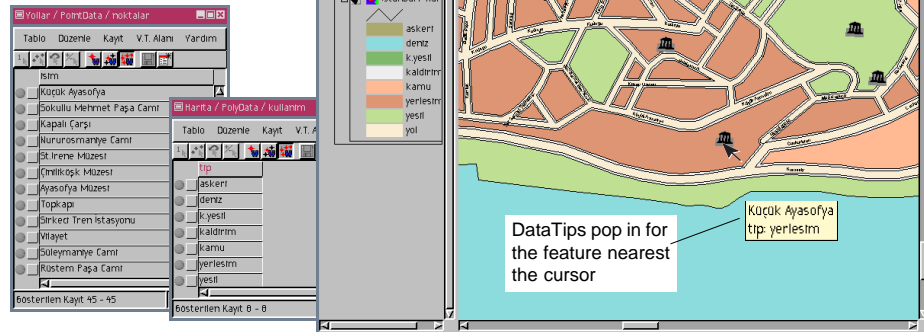


You can also make point symbols from TrueType fonts (see the *Symbols from TrueType Fonts Quick Guide*).



The TrueType fonts you obtain and use for menu and other interface elements can also be used in your language for your map legends, annotations, automatic feature labels, error messages, documentation, and help.

Your TrueType fonts are also used for all field types in database records, including string fields, and for DataTips and ToolTips.



## How to Use TrueType Fonts

- Acquire appropriate Unicode 2-byte fonts from the web or a font vendor and install.
- Install and select the desired localization package in TNTmips (Tools / System / Preferences).
- Select the desired font (Tools / System / Fonts).

## WANT TO KNOW MORE?

See the tutorial booklet entitled:

**Changing Languages (Localization)**

