

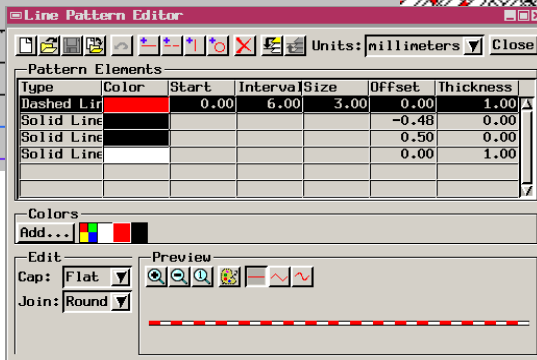
# Line Style Libraries

**DID YOU KNOW** . . . a selection of line style libraries is included with the TNT sample data?

## What Line Style Libraries Give You

- Display styles let you immediately identify element types
- Easily create legends for display or printed layouts
- Use existing styles for professional looking results
- Modify existing styles to create your own custom style libraries

This illustration shows the line style library for TIGER data which can be assigned by line attribute or by query.



The Line Pattern Editor lets you create new line styles and modify line styles in existing libraries.

## How Line Style Libraries Work

- Display a vector object that contains line elements with roadway attributes.
- Open the Vector Layer Controls window.
- In the Lines tab, set Style to By Attribute, and click the Specify button.
- In the Assign Styles by Attribute window, click the Styles button for the Style Object field.
- In the Select Object dialog, navigate to LITEDATA/BEREA/TIGSTYLE.RVC and select the TIGER style object.
- In the Assign Styles by Attribute window, match the Attribute Values with the Available Styles.

## WANT TO KNOW MORE?

See the tutorial booklet:

# Creating and Using Styles

