

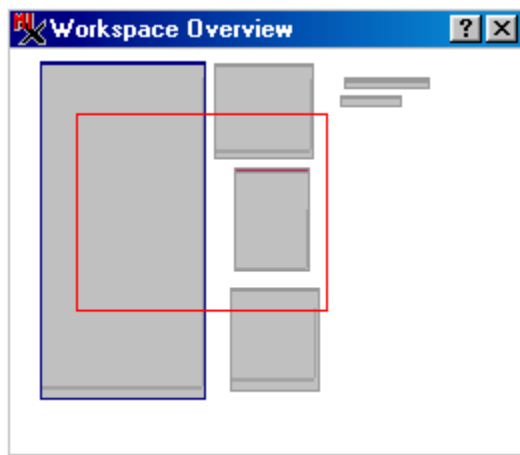
# Workspace Overview Window

The Workspace Overview window is presented whenever your X Server workspace is larger than your actual display resolution. The Workspace Overview window always stays in your real view; it never moves off into the virtual workspace. Use the Workspace Overview to move your view area and to move client windows and tools.

You can move your view area within the large workspace with the Workspace Overview tools described on this page. There are also three other ways to move the view area without using the Overview.

- (1) You can use the **scroll bars** at the edges of the real view.
- (2) You can **drag a window** to the edge and keep dragging, as if to drag it off the edge of the view. When you come to the edge, the view automatically scrolls in the direction you are dragging the window.
- (3) You can **drag "nothing"** off the edge of the view. That is, just hold down the left mouse button anywhere in the view and drag to the edge. When you come to the edge, the view scrolls in the direction of your drag action.

A **red view box** in the Workspace Overview window shows the position of the display area within the workspace. Drag the red view box with the left mouse button to move your **real view** position.



A **thumbnail** in the Workspace Overview window shows the position of each **client window**, dialog, and tool palette in the workspace.

Hold down the **shift key** and use the left mouse button to drag a thumbnail and thereby move its window in the workspace.

**Double-click** anywhere in the Workspace Overview to recenter the real view on that click point.

A **DataTip** pops in to identify a thumbnail item when you pause the mouse cursor over it.

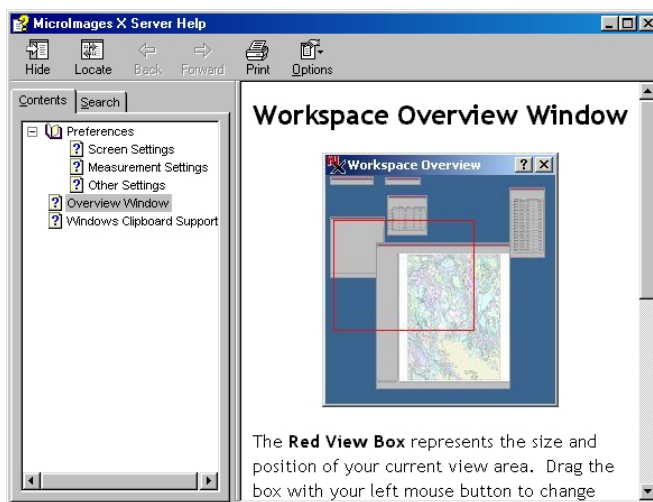
**?** Click the **Help** button to open the MicroImages X Server Help window.

A large X Server provides a large workspace: a **virtual TNT desktop** so you can scroll in large view windows or instantly move unused windows out of your real view.

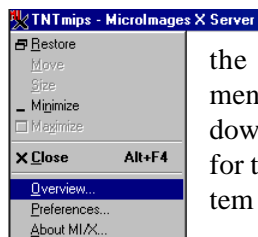
**Large Views** You can use this large workspace for very large View windows in a TNT display process. You can resize a View window up to the full size of the workspace in order to display a large geospatial object quickly at high resolution. It is easy to scroll across an oversized View window with the Workspace Overview tools or the workspace's scroll bars.

**Clean Up Clutter** You can also use the large workspace to park windows that otherwise would clutter your display or get buried under a pile of other windows. All windows and tools can be positioned anywhere in the workspace, inside or outside the area of your real view.

**Close and Reopen** You can close the Workspace Overview window by clicking its close button (X). You may wish to temporarily hide it and reclaim the space it takes on your display. Once closed, the Workspace Overview window will appear again in your next session unless you also turn off the Show Workspace Overview Window on Startup checkbox in the MicroImages X Server Preferences dialog. (Refer to the accompanying plate **MicroImages X Server Preferences**.) You can also reopen the Workspace Overview window in the same ses-



The MicroImages X Server Help window gives a complete description of the features of MI/X. The Workspace Overview Window page describes the ways to move around in the X workspace. Other pages describe setup preferences and the use of the Windows clipboard with MI/X.



sion by selecting Overview from the MicroImages X Server title bar menu, or by selecting Overview Window from the right-button mouse menu for the MI/X icon in the Windows System Tray.

