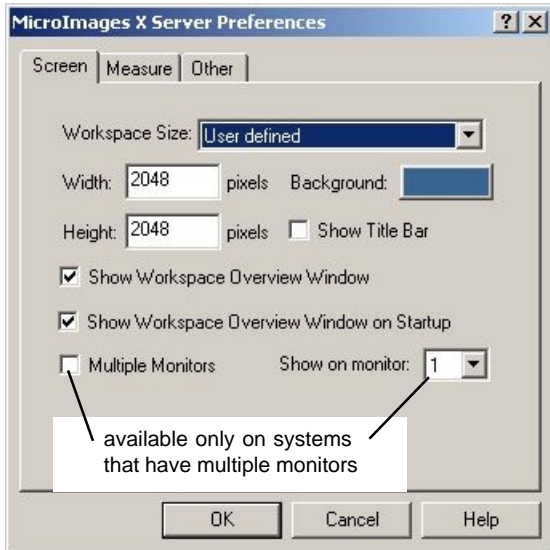


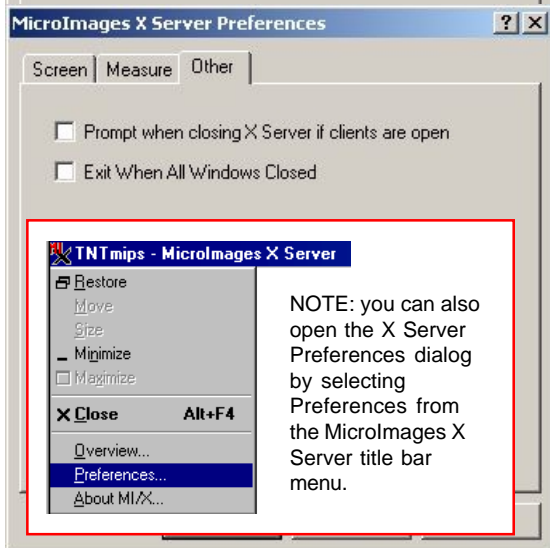
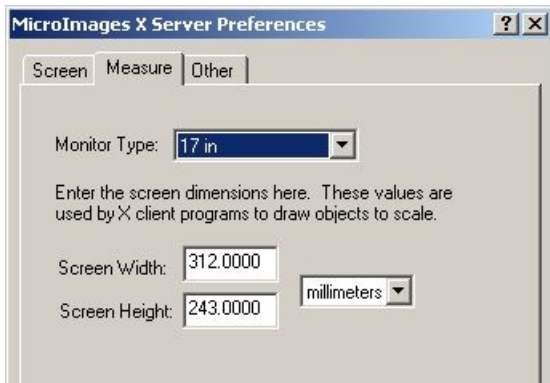
MicroImages X Server Preferences



The **Show Workspace Overview Window on Startup** checkbox lets you set the default show/hide state of the Workspace Overview window. With this option on, the Workspace Overview window always shows on startup if the workspace size is larger than the real view of your display monitor. With this option off, the Workspace Overview shows on startup only if it was on at the end of your previous session.

Check the **Multiple Monitors** checkbox if you have two or more monitors in your system and you want the MicroImages X Server to span all of them automatically. (Even if you don't check Multiple Monitors, you can always drag the MicroImages X Server between monitors whenever you want.)

The **Background** color box lets you set the background color. Click the color box to open a palette window.



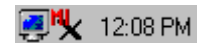
Screen Settings

The MicroImages X Server provides the workspace for all of your TNT process windows. Your workspace can be much larger than the real view of your display monitor. When the workspace is larger than your monitor's real view, the X Server window provides scroll bars and a Workspace Overview window to let you position your real view.

The **Workspace Size** drop down lets you set the height and width to a multiple of the real view of your monitor: Double screen height, Double screen width, or Double both height and width.

The **Width** and **Height** values let you specify any dimensions for your workspace.

When the workspace is larger than your real view, a Workspace Overview window opens. You can show/hide the Workspace Overview window with the **Show Workspace Overview Window** checkbox. The Workspace Overview window does not open unless the MicroImages X Server is larger than your monitor's real view.



Use the MI/X icon in the Windows System Tray to open the MicroImages X Server Preferences dialog.

The **Show On Monitor** option button is active if you have multiple monitors on your system, but have the Multiple Monitors checkbox turned off. This value tells the X Server which monitor to use as its home.

Measure Settings

The Measure tab establishes the physical dimensions of your screen display so that the TNT processes can display objects to map scale. Thus when you specify a 1:24,000 map scale in the TNT display process, TNT will adjust the zoom level so that your monitor displays the image at 1:24,000.

In the **Monitor Type** option menu, choose the size of your monitor to establish default Width and Height values for map scale calibration.

In the **Screen Width** and **Screen Height** boxes, enter the precise dimensions of the actual display area in your monitor. Default values are entered here according to your Monitor Type selection, but your actual values may vary slightly. Enter exact values to get more precise map scale calibration.

Other Settings

Click the **Prompt when closing X Server if clients are open** check box if you want a chance to cancel an exit operation if you still have TNT processes running. Normally when you exit the MicroImages X Server, all TNT processes are automatically terminated, but this prompt gives you the chance to change your mind, such as in the case of a process that you want to leave running till completion.

Click the **Exit When All Windows Closed** check box to have the MicroImages X Server close automatically when the last client process is closed. Normally there is no reason to keep the MicroImages X Server open after its last client process is closed.