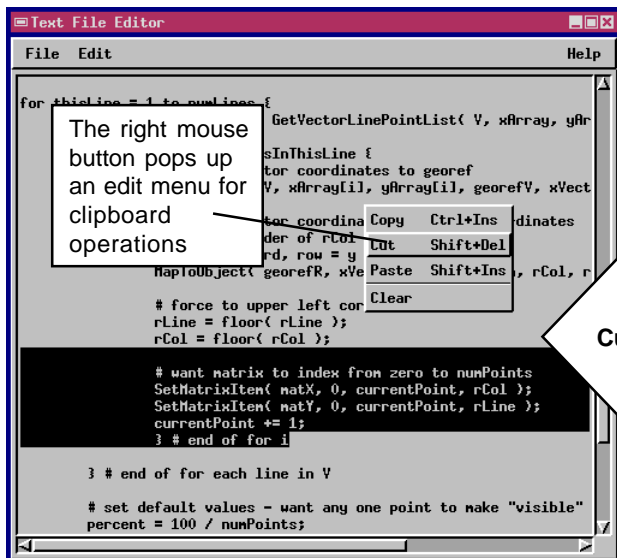
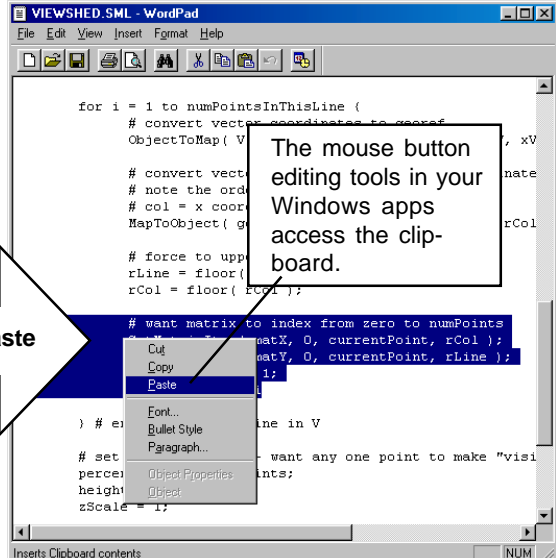


# Windows Clipboard Support

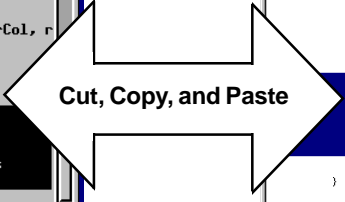


The right mouse button pops up an edit menu for clipboard operations

CUT, COPY and PASTE text between Windows applications and TNT processes.



The mouse button editing tools in your Windows apps access the clipboard.

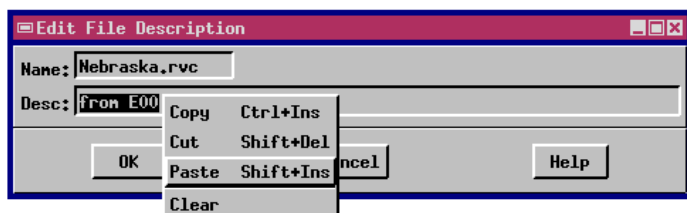


## For TNT Products

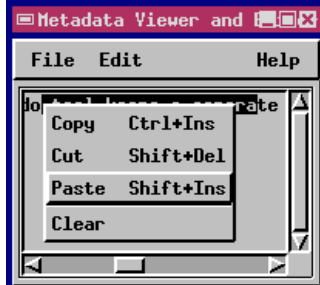
The TNT Products support cut, copy and paste on any editable text through a popup edit menu to and from the Windows clipboard. Click the right mouse button on any editable text to open TNT's popup edit menu. If you are working in a context where you can edit multiple lines of text, you will also find an **Edit** menu on the menu bar above the text area, or **Cut**, **Copy** and **Paste** buttons on a tool bar. No matter how you access it, the TNT Products can send text to and from the Windows clipboard through MI/X.

## Watch the Widgets

The clipboard feature works for all text "widgets" in the TNT products. A text widget is any interface component that accepts text entry from the keyboard. Text widgets include the editing area of the Text Editor (used for text files and SML scripts) as well as text boxes (for control values in process dialogs), and even database fields.



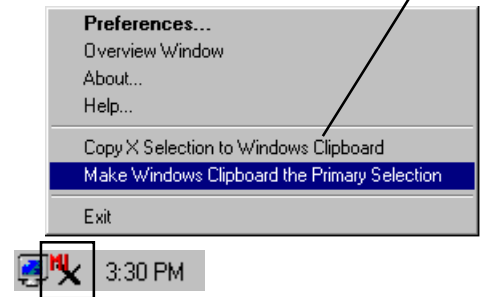
Use the clipboard feature with any text widget, such as the text box in a file description (above), or the Metadata Viewer and Editor window (right). This way you can easily copy metadata information directly into a Project File from any kind of Windows document (including Web pages).



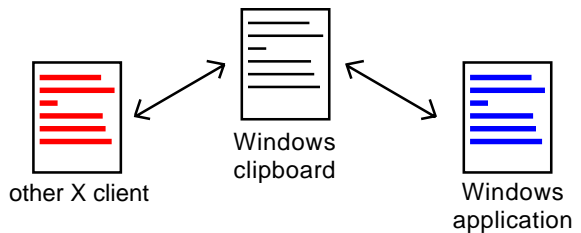
## For Other X Clients

If you use MI/X as a server for other X clients, you can still cut and paste to and from the Windows clipboard, but the interface is slightly different. Whereas the TNT products automatically

The right-button menu for the MI/X icon in the Windows System Tray controls the "X Selection"



copy the X selection directly to the Windows clipboard, that is not the way X clients normally do business. Therefore to copy selected text from an X client to the Windows clipboard, select **Copy X Selection to Windows Clipboard** from MI/X's System Tray menu. Likewise, to access the Windows Clipboard text and make it the X "primary selection," choose **Make Windows Clipboard the Primary Selection** from MI/X's System Tray menu.



For non-TNT processes, use the MI/X **System Tray** menu to copy the "X Selection" text to and from the Windows clipboard.