

# Tabbed Panels for Groups and Databases

The control and settings dialogs for display groups are now organized in tabbed panels. The Group Settings dialog appears in two forms:

(1) For a single group, when you select Projection / Clipping from the Group menu in the Group Controls window, the Group Settings dialog offers two panels: Projection and Clipping.

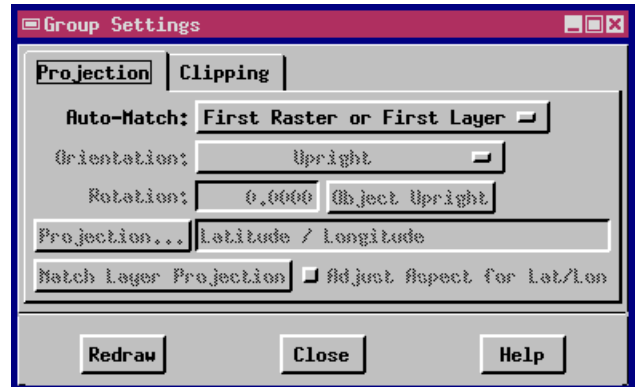
(2) For a Layout that includes multiple groups, when you select Group / Settings from the control window, the Group Settings dialog offers four panels: Projection, Clipping, Layout, and Special panels.

The **Projection** panel lets you select map projection, orientation, rotation, and which layer to treat as the base projection.

The **Clipping** panel lets you trim the group extents to the extents of the active layer or to a specified x-y range of map coordinates.

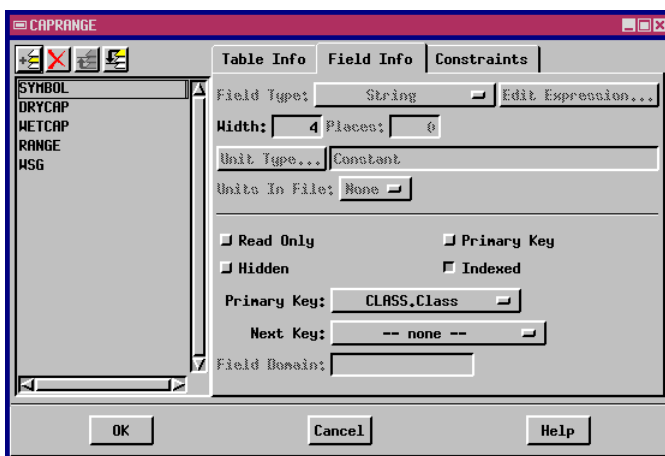
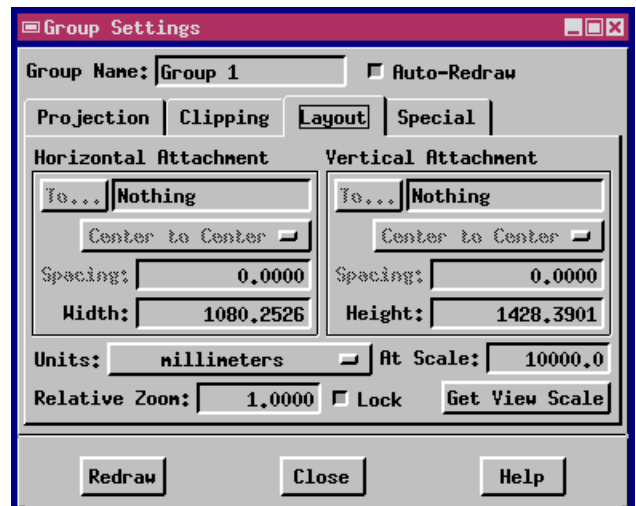
The **Layout** panel lets you control the placement of the group relative either to the page or to other groups in the layout. You can specify horizontal and vertical attachments as well as spacing and scale values.

The **Special** panel lets you specify a visibility range. For example you may want some layers of small extent and heavy local detail not to display at large extent zooms (small map scales). The Special panel also offers LegendView and template controls.



**Above:** A simple Group Settings dialog offers only the Projection and Clipping panels.

**Below:** When a Group is part of a complex Layout, the Group Settings dialog includes panels for Layout controls and Special features.



When you edit the definition of a database table, the dialog presents table attribute controls and settings in tabbed panels.

The Database definition dialog also now uses tabbed panels to present a table's attribute controls and constraints. When you select Table / Edit Definition in a database view, it opens the table definition dialog.

The **Table Info** panel lets you edit the object description, specify text encoding, and assign attachment type.

The **Field Info** panel give you control over the field type, attributes, and index key designation for any selected field in the table.

The **Constraints** panel lets you specify prefix and suffix labels, and data entry constraints, such as capitalization requirements and invalid value actions.