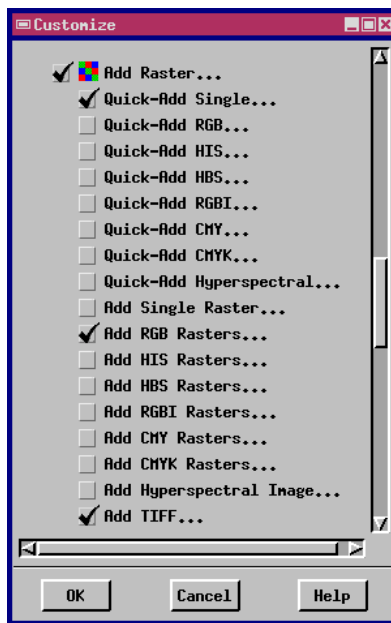
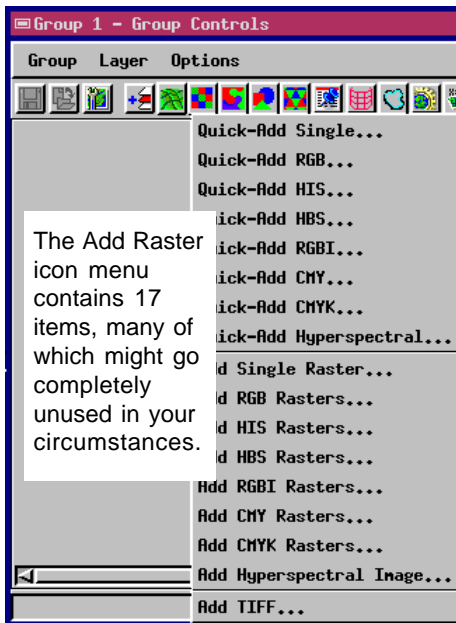


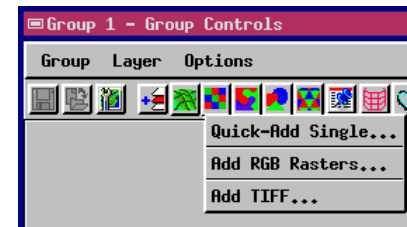
# Customizing Menus and Toolbars

You can customize the menus and tool bars in geodata display windows in the TNT products to simplify the list of selections and icons that you see in the program. When you select Customize Window from the Options menu in a window, the system opens a long Customize dialog as illustrated. Use the Customize dialog to turn off menu selections you never use and streamline the visual inter-

face. It is easier and faster to navigate shorter menus and pick from toolbars that have fewer icon buttons. You may also want to simplify the interface for production technicians or your clients who have very specific tasks and for whom long, full menus would prove distracting or confusing.



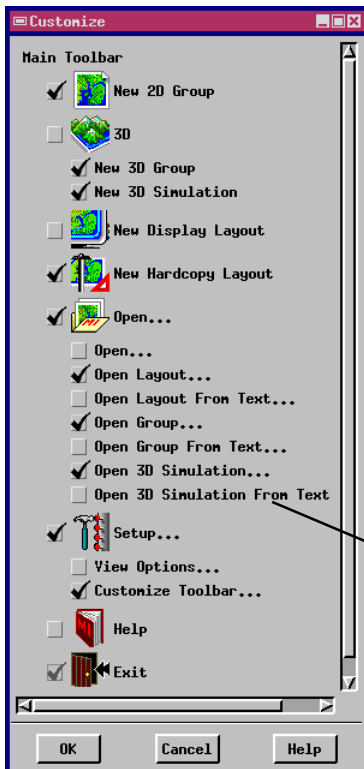
A checkbox with each item in the Customize dialog lets you hide or show that item in the interface of the parent window.



**Left:** The Customize dialog is used to turn off unused selections.

**Above:** The simplified Add Raster icon menu has only 3 items.

After you close the Customize dialog, your changes will show the next time you open an instance of the parent window.



The Options / Customize Window feature is available in all of the windows associated with the 2D and 3D display and layout processes, including the Group View window, the Group Controls window, the Group View (Perspective) window, 3D Simulation - Perspective View window, the Layout Controls window, and the Layout View window. The main Display Spatial Data toolbar also has a Customize Toolbar selection on the Setup menu.

The Customize dialog shows a hierarchical list of all the icon and menu selections available for the parent window. A checkbox with each item indicates whether or not the interface currently includes the item. Un-check the box to hide an item; check the box to show the item.

Customization features are available in many processes that use display windows, such as the Spatial Data Editor, TNTview, Surface Modeling, and Raster Extract.

Selection checkboxes in the Customize dialog (left) have been turned off for 3D, New Display Layout, Help, and four of the items on the Open menu. The resulting toolbar for the Display Spatial Data process is illustrated at right.

