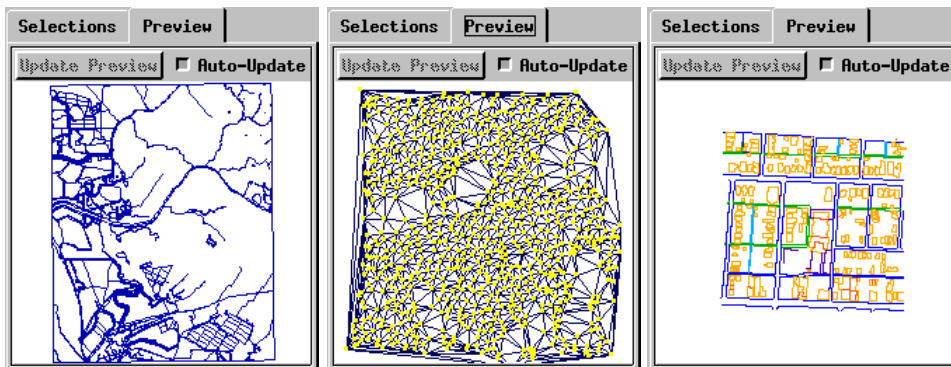
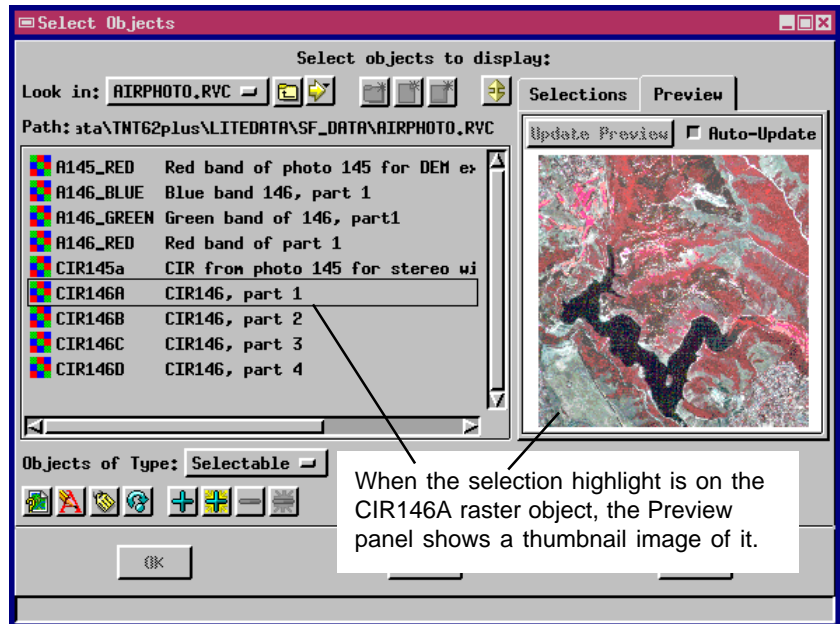


Thumbnail Preview in Object Selection

A Preview panel in the Select Objects dialog displays a thumbnail view of the currently highlighted item in the selection list. As you scroll through the list of selectable objects, you can see quickly what each object looks like. Thus if you have a long series of objects with similar names, the Preview panel simplifies the selection process by letting you see quickly whether an object contains a distinctive feature or the general area of interest.

For collections of geodata that include hundreds or thousands of objects, names and descriptions may be a good way to begin a search, but the object thumbnail will be the best way to complete a search.



Vector, CAD, and TIN objects preview with drawing styles, symbols, and patterns.

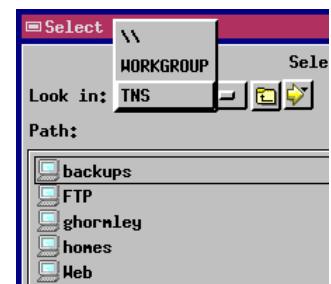
The preview panel can show a thumbnail view for all object types: raster, vector, CAD, and TIN. If your current selection activity accepts any object type, then scrolling the selection highlight down the list shows a thumbnail for each object in turn.

Universal Naming Convention (UNC)

Access to project materials across large networks is simplified for Windows users with support for UNC. A UNC string such as \\machine\directory\file.rvc is used to specify the location of a file on the local machine or on a remote machine in a network. With UNC, a user or application just specifies the physical server and shared device to access file information.

UNC alleviates the need for drive mapping whereby each user's computer assigns shared network devices to a drive letter at startup. As networks continue to grow in size, and you begin to use both internal and external storage for purposes such as intranets, it becomes increasingly difficult to map single drive letters to shared devices. Different users may use different letters for the same devices, drive letters convey no information about

the device ("is K the fileserver?"), and the user can run out of letters. Moreover, if your organization uses MicroImages floating licenses for the TNT products, more of your geodata will be stored on shared devices and less will be restricted to individual machines.



Above: shared network devices show in the selection list. **Below:** The Path: field displays an entire UNC network path.

