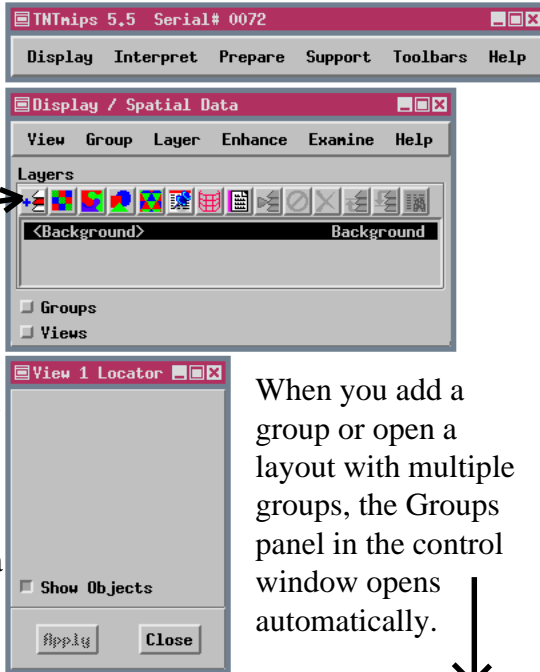


# A New Look for Spatial Data Display

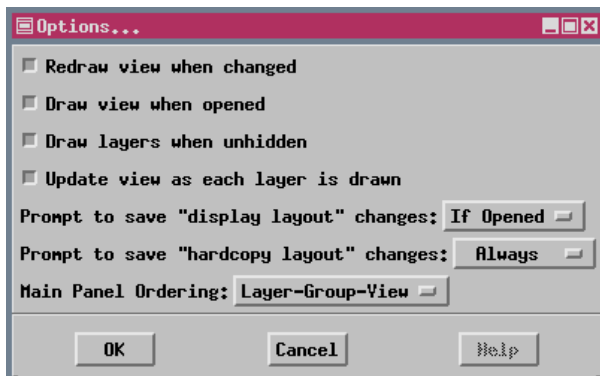
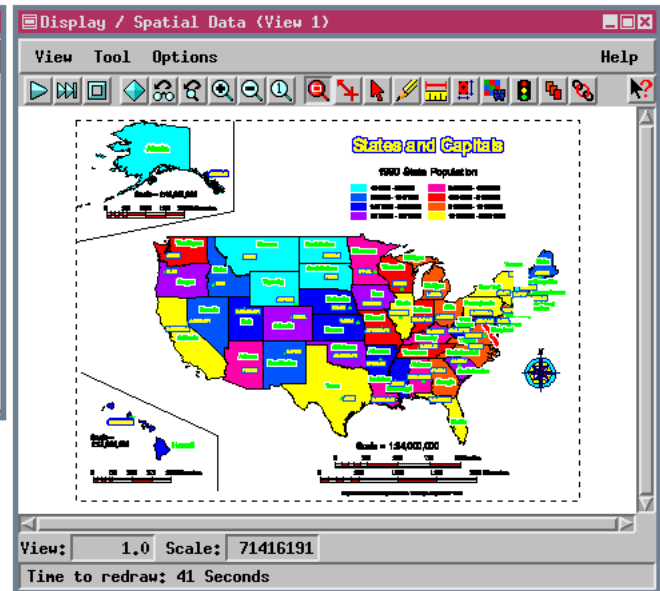
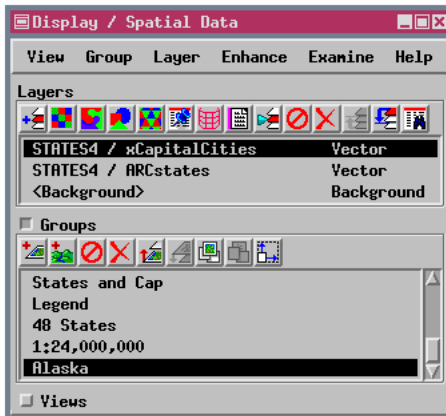
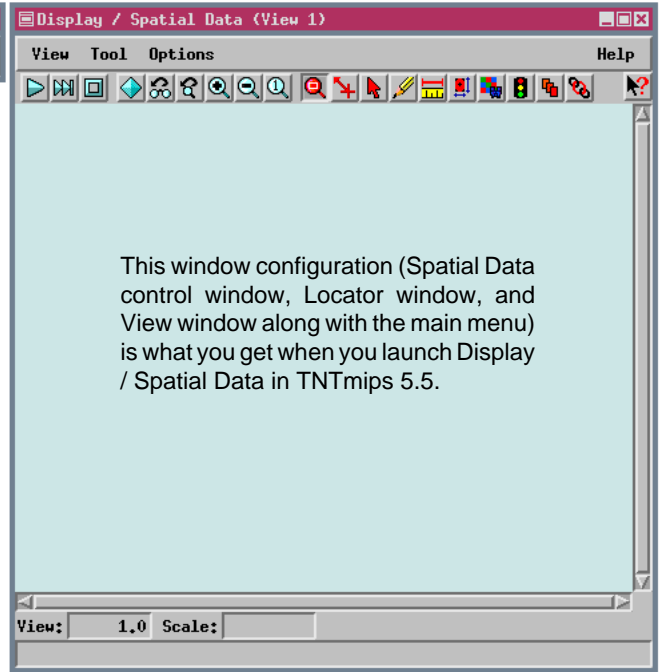
The main visualization process in TNTmips has a new, streamlined interface and a variety of options to increase ease of use for the beginner and provide additional control for the advanced user. The process even has a new name. MicroImages' clients with TNT products prior to version 5.5 know the process as Display / 2-D; it is now Display / Spatial Data. The name change reflects the new ability (described elsewhere) to incorporate 3-D groups into a layout.

The streamlined interface means all you have to do is click here to select an object for display. This icon is equivalent to the Layer / Quick-Add / Any option. Thus with the new interface design, you can click on the first icon in the Display / Spatial Data control window and choose any object type for display. The selected object or layout is automatically drawn with the new default display options.

The default options are set with the beginner in mind; experienced users that routinely work with complex layouts may feel too much automatic redrawing occurs with the default options. You can set a variety of redrawing and saving preferences, even to function just like in version 5.4 and earlier, by choosing Options... from the View menu in the control window.



When you add a group or open a layout with multiple groups, the Groups panel in the control window opens automatically.



These options include automatic redrawing when a layout is changed, automatically drawing a layout when opened, drawing layers when unhidden, and updating the view incrementally as each layer is drawn. (An automatic redraw toggle is also found in the group controls window.) You can also set whether to be prompted to save layouts with separate settings for display and hardcopy modes. The order of the Layer, Group, and View panels also is now individually configurable. As always, TNTmips provides more options and lets you decide which best suit your working style.