

# Combining Local/Web Maps

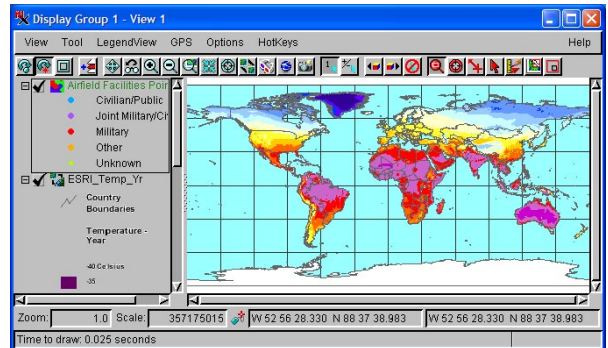
In addition to supporting display of any combination of raster, vector, shape, CAD, TIN, and pinmap objects, the Display processes in the TNT products let you select layers published by any Web Map Service (WMS) or ArcIMS to combine with your local layers. For example, you can use WMS and ArcIMS layers as reference layers when creating and editing your own spatial data in the Spatial Data Editor. MicrolImages maintains catalogs of available WMS (>900,000) and ArcIMS (>400,000) layers. The search capabilities in the TNT products enable you to quickly select from this extensive public collection of map and image layers using text, geographic area, or addresses as your search criterion.

## Combining Local/Web Map Highlights:

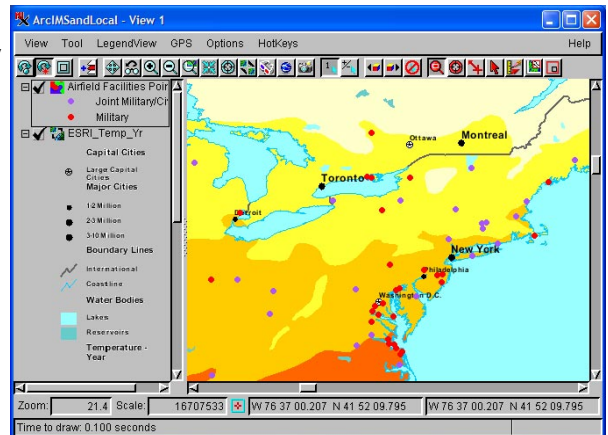
- Combine WMS, ArcIMS, and local geodata layers for display
- WMS and ArcIMS layers can be used for reference when creating and editing local geodata layers
- Select local geodata in a wide variety of formats without importing or changing CRS
- Use all Display tools, such as sketching, measuring, and GPS tracking, with WMS and ArcIMS layers
- Choose from more than 900,000 WMS layers and 400,000 ArcIMS layers to build your own custom displays
- Search sites for text, by geographic extents, or addresses
- Search servers, layers, or both in a single pass
- Search uses current WMS/ArcIMS catalogs maintained on MicrolImages web site so the latest catalog is always used
- Extents of layers in current view automatically entered for geographic extents search
- Sort search results alphabetically by service title or by ground area
- Choose from all layers offered by the selected service, which are then composited into a single display layer
- Save your own list of favorite sites
- View URL for each service as DataTip
- Choose to view with/without relief shading if available as an image dimension
- Choose between anaglyph and other 3D stereo viewing modes for layers where available

## Display Layers in Google Earth

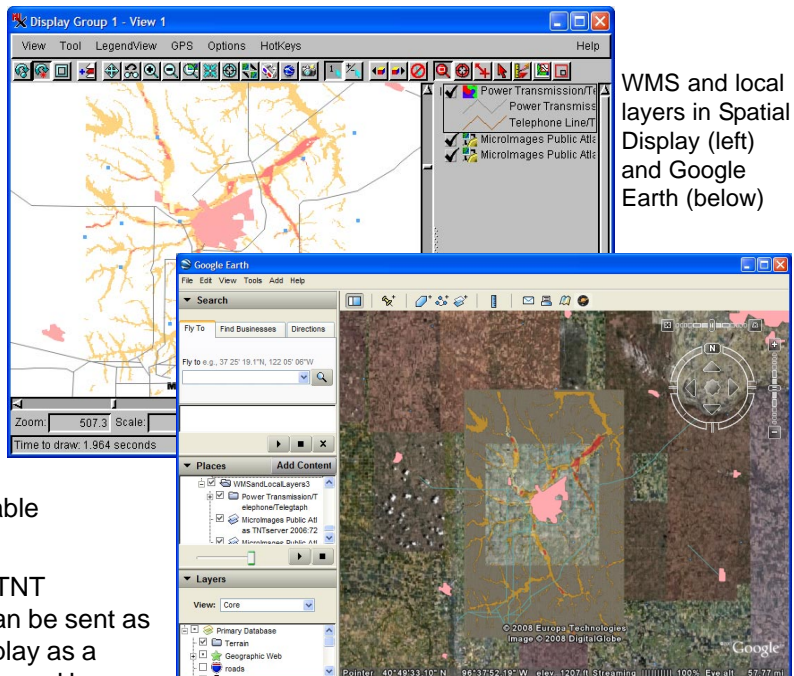
Any map or image layer you can display in the TNT products, including WMS and ArcIMS layers, can be sent as a snapshot or a complete geodata layer for display as a ground overlay in Google Earth. Non-georeferenced layers, such as logos, are rendered as screen overlays.



ArcIMS and local vector layer



Same layers as above but more components visible (map scale controls applied to local and ArcIMS layers)



WMS and local layers in Spatial Display (left) and Google Earth (below)