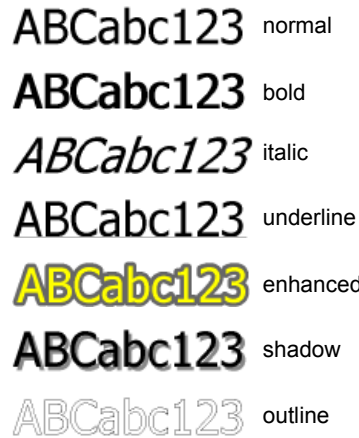
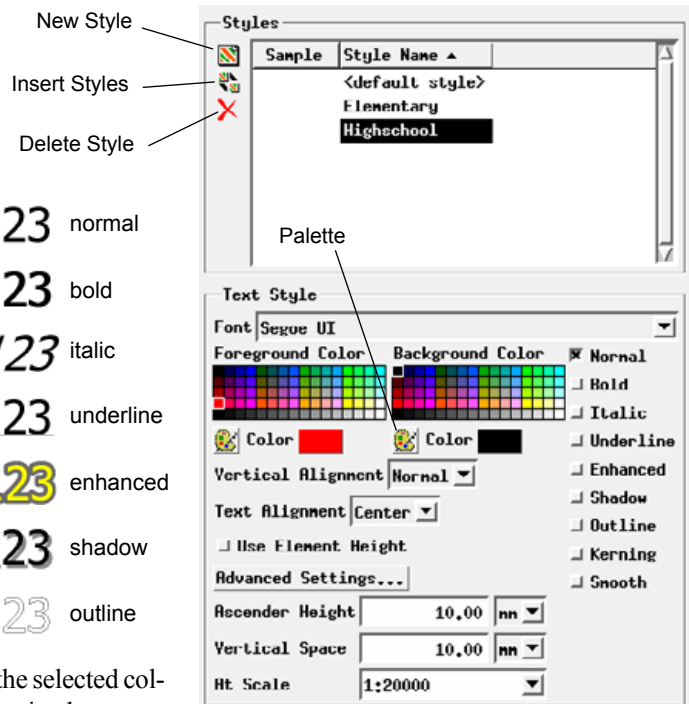


Setting Text Styles

The Text Style controls in the Style Editor allow you to set the font, font style, color, alignment, and size of text displayed in geospatial views in TNTgis. It allows you to set styles for label elements in vector, CAD, and sketch objects; dynamic labels; text layers in print layouts; and legend sample text in print layout legends.

The controls for creating and editing text styles are illustrated to the right. In some contexts, such as adding a text layer to a print layout, you can only create or edit a single text style, so the Style Editor window contains only the Text Style controls. In other contexts, such as adding label elements to a vector object in the Editor, you can create and save multiple styles. In these contexts a Styles box above the Text Style controls provides a list of the styles with the name for each style. The style list may include a <default style> that you can select or edit. Press the New Style icon button to the left of the list to create a new style based on whichever style is currently selected in the list. New styles are automatically assigned a default name, which you can edit in the list to provide a more meaningful name. Changes made with the Text Style controls apply to the style that is currently selected in the list. You can use the Insert Styles icon button to navigate to and select styles from another style object to copy to the list. The Delete Style icon button deletes the selected style from the current style object.



the selected color is shown on the Color button. To choose colors from a different palette, press the Palette icon button. The Select Palette window that opens shows a graphic list of available discrete color palettes. Left-click on the desired palette in the list and press the OK button to show it in the Text Style controls.

Font and Font Style

Press the arrow icon button on the right side of the Font combo-box control to drop down a menu listing all of the scalable fonts that are installed on your computer. The selected font is shown in the control's text field.

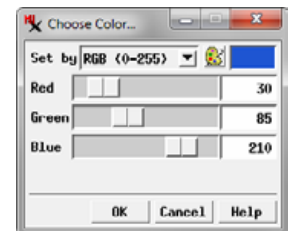
The font style is set using toggle buttons on the right side of the panel below the Font menu. When you set the Normal, Bold, Italic, or Bold plus Italic options, the corresponding predefined font in the selected font family is automatically used if available, otherwise the selected effect is applied to the normal font. The Underline, Enhanced, Shadow, and Outline options apply special rendering effects to the font as illustrated above. The enhanced and shadow effects can be only be applied to normal or italic text.

Turning on the Kerning option adjusts the spacing between certain pairs of characters depending on the shapes and sizes of the characters. The Smooth option applies anti-aliasing to the edges of the characters to smooth them as they are rendered.

Foreground and Background Color

Use the Foreground Color and Background Color controls to set the font colors. The foreground color is the primary font color, while the background color is used for the enhancement or shadow when those style options are set. Each set of color controls includes a palette of colors, a Palette icon button, and a Color button. Choose a color by left-clicking on a color tile in the palette;

You can create a custom color by left-clicking on the Color button, which opens the Choose Color window. The *Set by* menu in this window determines the type of controls that are shown. The menu provides a choice of color models that you can use for specifying a color, including RGB (0-100), RGB (0-255), HIS, and others. Adjust the color sliders or enter values in the numeric fields and press OK to set the custom color, which is then shown on the Color button.



Text Alignment

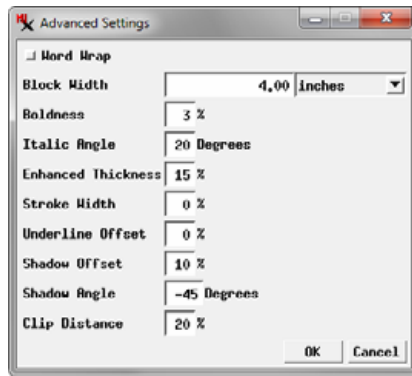
The setting on the Text Alignment menu sets the horizontal alignment of the text. The alignment options are Left, Right, Center, and Justified. Justified text fills the full width of the text block to align with both the left and right margins, altering the spaces between words and letters to achieve this effect. In order for the justified setting to take effect, you must turn on the Word Wrap option and set a block width in the Advanced Settings (see next section).

Advanced Settings

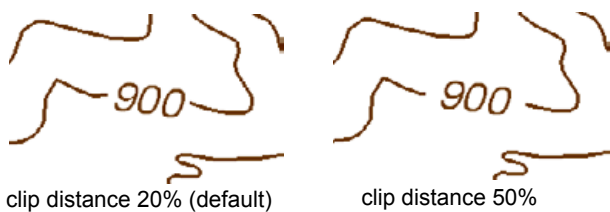
Use the Advanced Settings button in the Text Style controls to open the Advanced Settings window. This window allows you to configure a text block, set the clip distance for label elements, and customize text style rendering.

(continued)

If you are adding text consisting of multiple sentences or paragraphs, such as explanatory notes in a print layout, you can set the width of the text block in the page by entering a value in the Block Width field. Use the menu to the right of this field to choose the page measurement units (inches, millimeters, or points). Turn on the Word Wrap toggle at the top of the window to fit the text to this block width, automatically breaking lines at a space, tab, or hyphen. When entering the text, you only need to use the <Return> or <Enter> key at the end of a paragraph. If the block width is changed, the word wrap is automatically adjusted to the new width. If the Text Alignment option is set to Justified, the word-wrapped text is also aligned to both left and right margins of the text block.



The Clip Distance setting applies to label elements in vector, CAD, and sketch objects. It sets margin distance that defines the dimensions of a clipping rectangle around the label. When the *Clip elements to label boundaries* display option is turned on, other elements in the object are not rendered within the clipping rectangle (e.g., a line element is not rendered through a line label). The default Clip Distance is 20% of the height of the label text, but you can increase or decrease this value using the Clip Distance field.



The remaining Advanced Settings allow you to adjust the rendering of different text styles. You can set the amount of Boldness of bold text and the slant angle of italic text (Italic Angle). Note that if the selected font has predefined bold and italic variants, setting custom boldness and italic angle values results in these variants not being used; instead the normal font is rendered in bold or italic style with the specified settings.

The Enhanced Thickness value sets the thickness of the background color rendering in the Enhanced text style. The Stroke Width value controls the thickness of an underline and of the outline in Outline text. Any stroke width value that would result in a width of less one screen pixel is rendered at one pixel wide, including the default value of 0%.

The Underline Offset value sets the downward offset between an underline and the text baseline. The Shadow Offset sets the offset distance between the background-color shadow characters and the foreground text, and the Shadow Angle sets the offset direction in degrees measured counter-clockwise from the x-axis direction.

Boldness 5%

ABCabc123

Italic Angle 35%

ABCabc123

Underline Offset 8%,
Stroke Width 4%

ABCabc123

Enhanced
Thickness 8%

ABCabc123

Shadow Offset 5%,
Shadow Angle -60

ABCabc123

Outline style with
Stroke Width 3%

ABCabc123

Ascender Height, Vertical Space, At Scale

The value in the Ascender Height field sets the height of the tallest characters in the text in the units specified by the adjacent menu: in (inches), mm (millimeters), pt (points), or px (pixels). The Vertical Space value sets the spacing between lines of text in your choice of units. The At Scale setting determines the scale at which the specified ascender height and vertical space apply. You can enter a desired map scale fraction or scale number (e.g., 1:36000 or 36000) in the field or press the arrow icon button to the right of field to open a menu from which you can choose Fixed, Design, or Current. The Current option sets the scale field to the current scale of the associated View window. The Design option sets the style to use the design scale specified for a group or print layout in which the text is used. With these options text will appear larger or smaller as you zoom the view in or out. With the Fixed option the text is drawn with the same dimensions on screen regardless of the scale of the view.

Use Element Height (Label Elements)

The Text Style controls for label elements in vector, CAD, and sketch objects include a Use Element Height toggle button. All label elements have an element height (in geometric object coordinates) set when the element was created. Turn on the Use Element Height toggle to set the display height of the labels to be equal to the element height. The Ascender Height, Vertical Space, and At Scale controls are inactive when this option is selected.

Vertical Alignment (Label Elements)

The Vertical Alignment menu is included with the Text Style controls for label elements. The menu choices set the vertical positioning of the label text relative to the label baseline, as shown by the illustrations of the text tool below. The Normal option places the bottom of the first line of the text on the baseline, while the remaining options place the Bottom, Center, or Top of the label text at the baseline. The Normal and Bottom options have the same effect for labels with a single text line.

