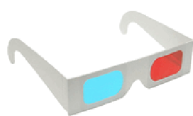
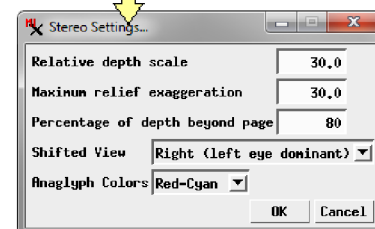
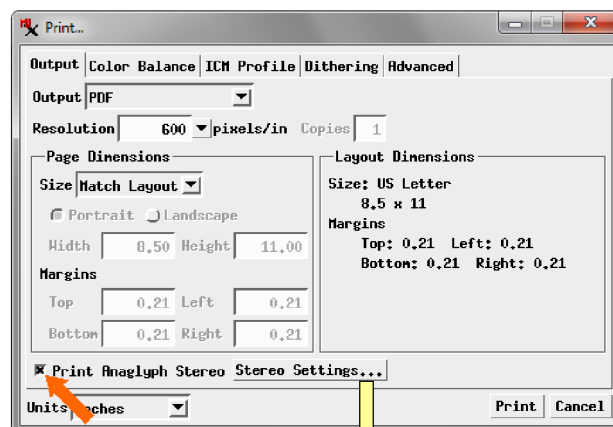


# Print Anaglyph Stereo Images

Anaglyph stereo mode is useful for producing stereo images that can be viewed on-screen and in hardcopy prints using inexpensive red-cyan 3D glasses. The TNTmips Display process allows you to print layouts with anaglyph stereo images to paper prints or to print to a file (such as PDF or TIFF). The group with the image to be rendered in stereo must include a terrain layer (elevation raster or terrain tileset). To print in anaglyph stereo, press the Print icon button on the Display Manager to open the Print window, then turn on the Print Anaglyph Stereo toggle button on the Output tabbed panel. Press the Stereo Settings button to open the Stereo Settings window and adjust the parameters for anaglyph stereo rendering as explained in the Technical Guide entitled *Spatial Display: View Orthoimages in Stereo Using DEM*. Stereo settings for anaglyph printing are separate from those you may have set for stereo viewing on-screen, which could include stereo modes for other viewing devices.



View the image below through red-cyan anaglyph 3D glasses to see it in stereo.

**This page layout was composed with and printed to PDF from the Display process in TNTmips.**

