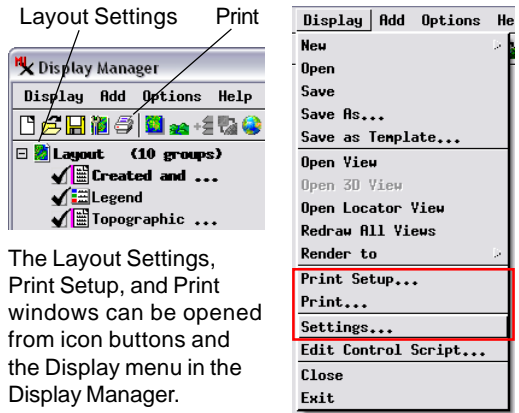
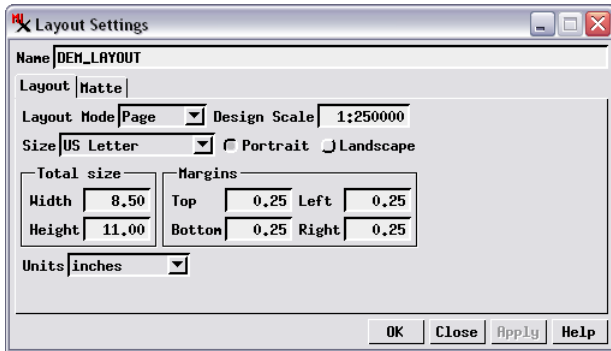


# Layout Settings and Print Setup

When you are preparing a layout for printing, two of the most important design decisions are the map scale at which the map and/or image data are to be portrayed and the dimensions of the print media best suited to the size and scale of the layout. In the TNTmips Display process (or TNTview / TNTedit) you set these parameters using the Layout Settings window. When it is time to print the layout, you select the printer (or type of file output) and set the print resolution and other parameters using the Print Setup or Print windows.



The Layout Settings, Print Setup, and Print windows can be opened from icon buttons and the Display menu in the Display Manager.



## Layout Settings Window

The Layout Settings window (illustrated above) can be opened from the Display Manager by pressing the Settings icon button to the left of the layout name in the layer list; by choosing *Settings* from the layout entry's right mouse-button menu; or by choosing *Settings* from the Display menu (see illustration top right).

The Layout tabbed panel provides controls for the main layout settings. The Layout Mode menu allows you to choose between three types of layouts: *Page* (for print layouts), *Display* (for viewing on-screen), and *Tiled* (a type of display layout with multiple spatial groups arranged in a tiled fashion in the View). The Design Scale field allows you to enter the desired map scale. This field shows the scale as a ratio value (e.g. 1:36000) but allows you to enter either the full ratio or just the denominator (scale number).

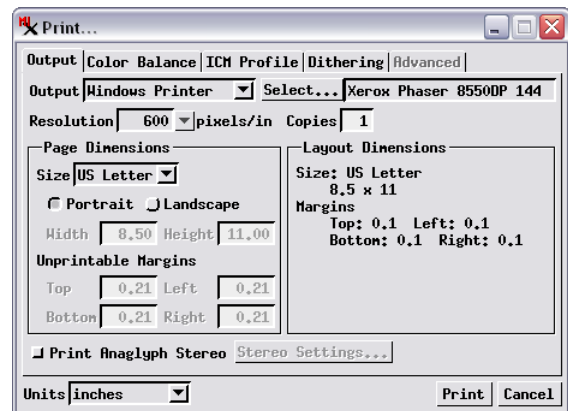
When you choose *Page* from the Layout Mode menu, additional controls are shown on the Layout tabbed panel. You can use the Size menu to choose from a wide selection of standard page sizes, and the Portrait / Landscape radio buttons to choose the page orientation. The resulting page dimensions are shown in the Width and Height fields. You can use the Units menu below the size controls to choose the units to use for the page size and margins. You can set a non-standard page size simply by changing the value in the Width and/or Height field. When these values do not correspond to a standard page size, the Size menu automatically reverts to the *Custom* option.

Use the numeric fields in the Margins grouping (Top, Bottom, Left, and Right) to set the size of the non-printing margins of the page layout. These settings are shown in the View of a page layout by a red rectangle that marks the outer boundary of the printable area of the page.

The Matte tabbed panel on the Layout Settings window provides controls for adding decorative graphic effects such as borders, drop-shadows, and solid or gradient backgrounds to the layout; see the Technical Guide entitled *Spatial Display: Matte Graphic Effects in Layouts* for more information.

## Print and Print Setup Windows

The Print Setup window can be opened by choosing *Print Setup* from the Display menu. The Print window can also be opened from the Display menu or by pressing the Print icon button on the Display Manager toolbar (see illustrations above). The Print window (illustrated below) and Print Setup windows are identical except that the Setup dialog lacks a setting for number of copies, and it has an OK button (which merely saves the settings) instead of a Print button (which saves the settings and executes the print job).



The Output tabbed panel on the Print / Print Setup windows provides the general print controls. The Output menu lets you choose to print a layout either to a printer or to one of

(over)

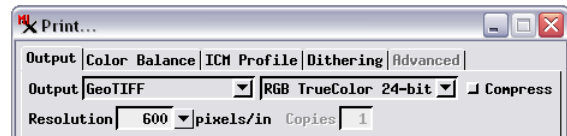
several file formats. To print to a printer, choose *Windows Printer* from the Output menu (or *Mac Printer* if using a Mac). Press the Select button next to the Output menu to open your operating system's Print Setup dialog to select a system printer and its settings. The text field next to the Select button shows the current printer selection. (See the following section *Printing to a File* for specifics on printing your layout to a file.) The Resolution field shows the resolution used to render your layout to the printer.

The Layout Dimensions pane on the right side of the Print / Print Setup window shows (for reference) the page size and margins that were set previously for the layout in the Layout Settings window. The Page Dimensions pane on the left side shows the actual standard page size name (if any) as determined by your current printer selection and paper source. If multiple paper sizes are available from the selected printer, you should choose the appropriate paper source in the system Print Setup dialog. You can use the radio buttons below the Size menu to choose between Portrait or Landscape orientation. However, because the page dimension and margin settings are specified by your printer selection and setup, these controls cannot be manually reset in this pane.

Note that if you have set layout margins smaller than the minimum supported by the printer, the actual minimum value is shown in the appropriate Unprintable Margins field and applied during printing. Any layout items that extend into the margins are clipped off. In this case, or if there is a significant mismatch in page dimensions between the saved layout settings and the available printer settings, you may need to adjust the layout settings and/or the placement of elements in the layout to resolve the problems before printing.

### Printing to a File

Using the Output menu, you can choose to print the layout to one of a number of available file formats, including PDF, Adobe Illustrator, EPS, SVG, TIFF, GeoTIFF, and RVC (a raster object in a MicroImages Project File). Use the Resolution menu to choose the resolution (in pixels per inch, centimeter, or millimeter) at which to render the layout to the file (see illustration at top right of page). For several of the file format choices an additional option control appears next to the Output menu. For Adobe Illustrator files you can choose whether to transfer color information in RGB or CMYK values. For TIFF, GeoTIFF, and RVC files, you have the option to print to an RGB TrueColor 24-bit image or to a Color Dith-

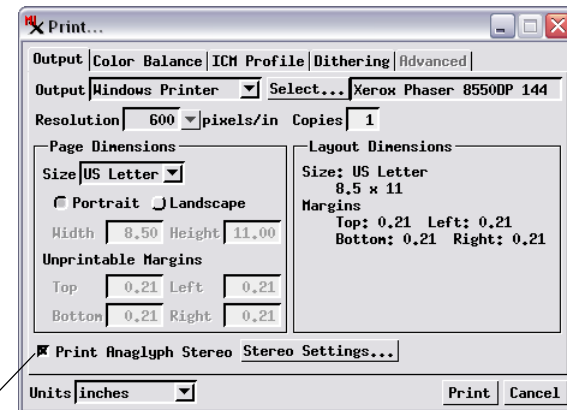


When printing to a file, use the Resolution menu to set the resolution to use to render the layout.

ered image suitable for delivery to a commercial printing service. The RGB TrueColor option for TIFF and GeoTIFF also provides a Compress toggle button that you can turn on to apply compression to the resulting image.

### Printing Anaglyph Stereo

If a spatial group in the print layout includes a terrain layer (elevation raster or terrain tileset), you can print the layout to a printer or file while rendering the group in anaglyph stereo. The Print Anaglyph Stereo toggle button activates anaglyph rendering for eligible groups in the layout (see illustration below). Press the Stereo Settings button to open the Stereo Settings window to set the parameters for anaglyph stereo rendering (see the *Spatial Display TechGuides* entitled *Print Anaglyph Stereo Images* and *View OrthoImages in Stereo Using DEM* for details. Stereo settings for anaglyph printing are separate from those you may have set for stereo viewing on-screen, and you do not need to activate stereo rendering in the View prior to printing in anaglyph stereo.



Turn on the Print Anaglyph Stereo toggle button to activate anaglyph rendering and press the Stereo Settings button to set the stereo rendering parameters.

### Color Balance, ICM Profile, and Dithering

The specialized controls on the Color Balance, ICM Profile, and Dithering tabbed panels allow you to adjust the color rendering during printing and adjust how the layout is processed for printing. These controls are discussed in detail in the Tutorial booklets entitled *Printing* and *Getting Good Color*.

