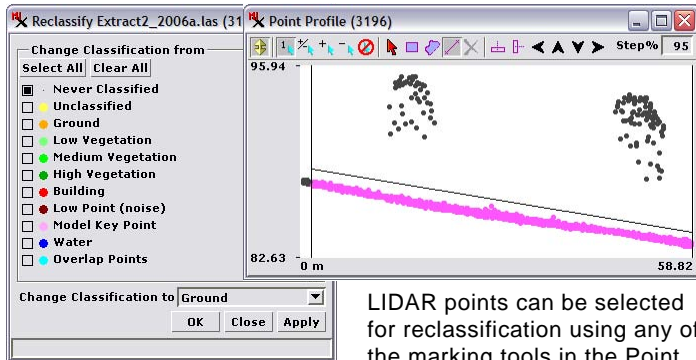
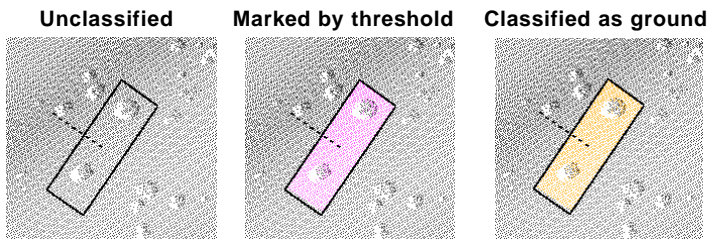


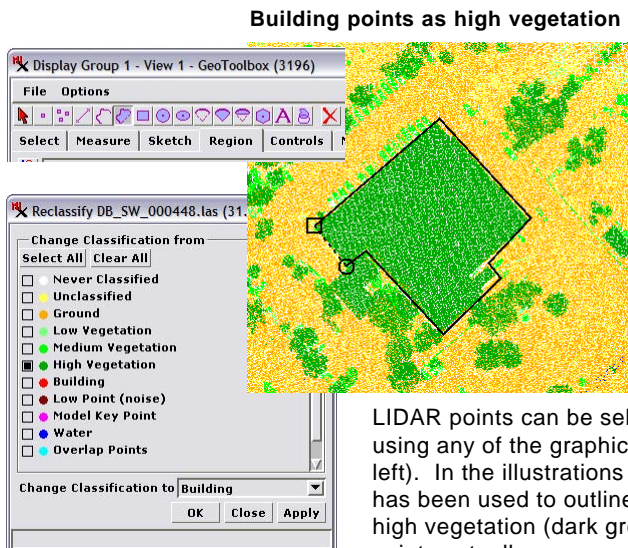
# Interactive Editing of Point Classes

LIDAR point files in LAS format include a Classification field that can be populated using choices in the standard Classification table included in the file. TNTmips provides the ability to interactively change these point classifications directly in LAS files that are linked as shape objects. To begin, display the LAS shape object and open the Reclassify window from the Display Manager using the right mouse button menu for the shape layer (see illustration to the right).



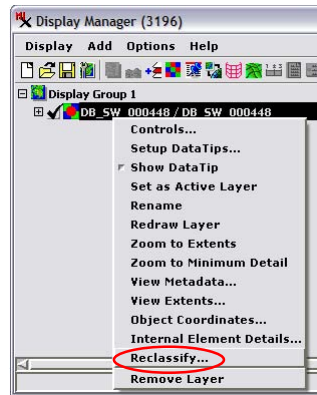
LIDAR points can be selected for reclassification using any of the marking tools in the Point Profile window.

In this example unclassified points corresponding to the ground surface are marked using the Threshold tool in the Point Profile (above and top center). The Reclassify window was set to change Never Classified points to Ground (above left) and the marked points were reclassified (top right).

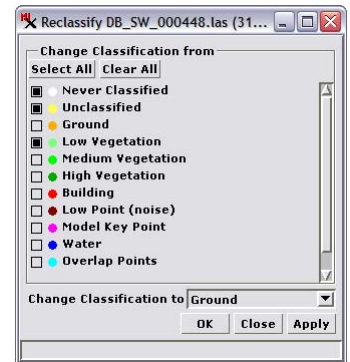


LIDAR points can be selected in the View for reclassification using any of the graphic tools in the GeoToolbox (illustration top left). In the illustrations above left and center the polygon tool has been used to outline a group of 27,364 points initially classified by an automated procedure as high vegetation (dark green). The rectilinear shape of this set of points in plan view indicates the points actually represent a building roof. In the Reclassify window (left) high vegetation was set as the only point class to change, so the selection polygon can include points in other classes. The reclassification procedure changed the class of 25,498 of the marked points (as indicated by the status line in the Reclassify window) in a few seconds (above right).

the only point class to change, so the selection polygon can include points in other classes. The reclassification procedure changed the class of 25,498 of the marked points (as indicated by the status line in the Reclassify window) in a few seconds (above right).



In the Display Manager the Reclassify option is available on the right mouse button menu for any shape object layer corresponding to a linked LAS file.



The Reclassify window provides a pick list of LAS LIDAR point classes from which you can choose one or more point classes to change. Set the single output class using the *Change Classification to* menu.

The Reclassify window (above) shows a built-in pick list of LAS LIDAR point classes with the associated point styles that have been set for the selected shape object. You can choose one or more classes to be changed and set a single output class using the *Change Classification to* menu. You can select points for reclassification using any of the marking tools in the View using standard GeoToolbox marking tools (illustrations to the left; see the Technical Guide entitled *LIDAR: Point Profile Tool*) or select points in the View using standard GeoToolbox marking tools (illustrations below). Once you have set the input and output classes and selected one or more LIDAR points, press the OK or Apply button on the Reclassify window. Only the marked points matching the chosen input classes are reclassified.

Building points as high vegetation

Marked in View using polygon

Reclassified as building

