

System

Zoom Google Earth to Match View



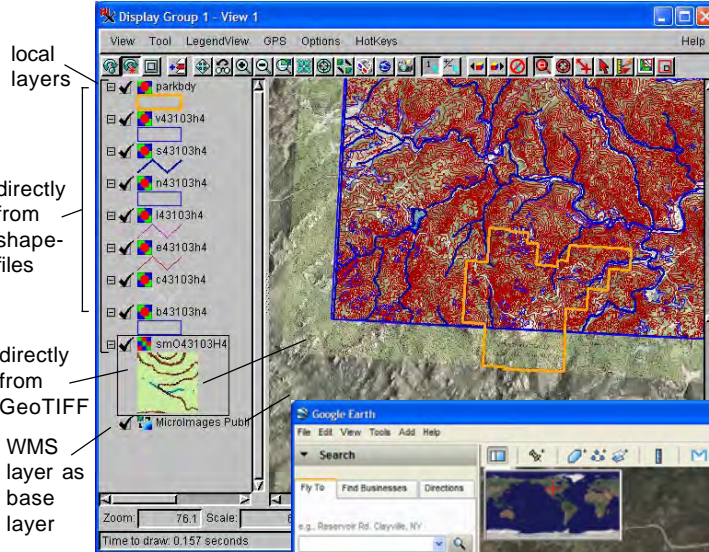
You can open Google Earth and zoom to the same extents as currently shown in the TNT View window by clicking on the Zoom Google Earth to Match View icon in Spatial Display, the Editor, TNTAtlas, and any other

TNTmips process that has a View window. When you are displaying an area you would like to view and discover more about by using Google Earth's resources, click on the Zoom Google Earth to Match View icon. When you click on this button, Google Earth will open (provided you have it installed) and zoom to the approximate extents of your view looking straight down.

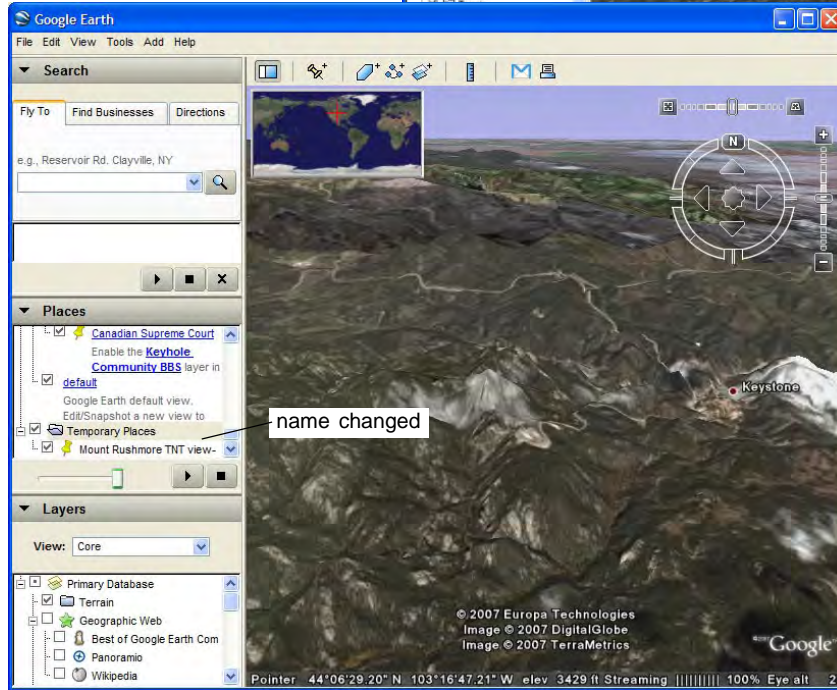
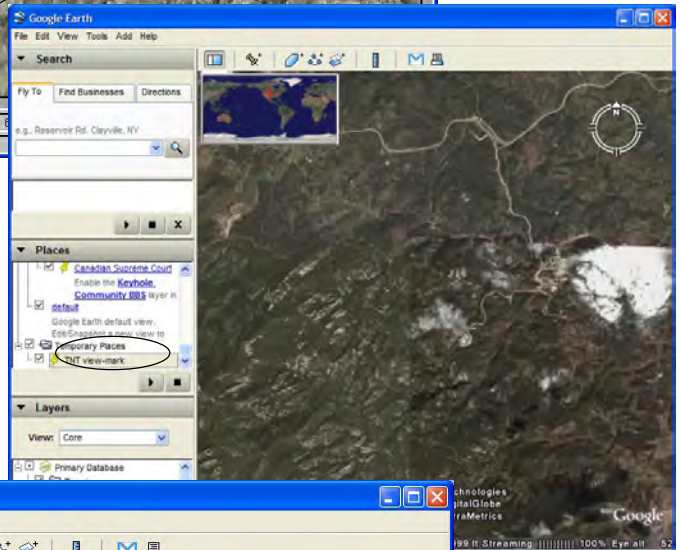
Any additional layers you turned on for viewing in your last Google Earth session (shown under Places or Layers) will also be shown if they fall within the area displayed. If Google Earth is already open, its view will be repositioned and zoomed to show the extents you have selected in TNT. The Google Earth view will also be returned to the default orthogonal viewing perspective.

Use the graphic tools in Google Earth to zoom and tilt its view as desired. The image shown below in Google Earth has been tilted from its default orthogonal view (right) to reveal the topographic details of the surrounding terrain for the area in the TNT view. You must have the Terrain layer enabled in Google Earth to see this effect.

The results of turning on some of the other standard layers are shown on the back of this page. You could take the time to gather the same types of information and make it available in a TNTAtlas, including a link to a self-navigated or automatic flythrough using TNTsim, if you want to distribute the information. However, for casual use, you may find that others have gathered the information of interest to you in Google Earth.

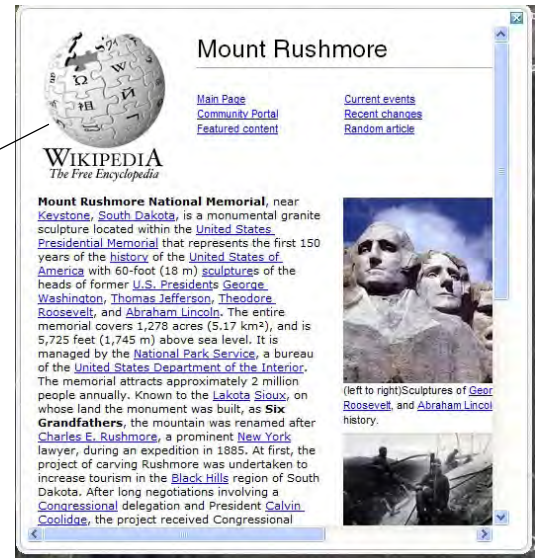
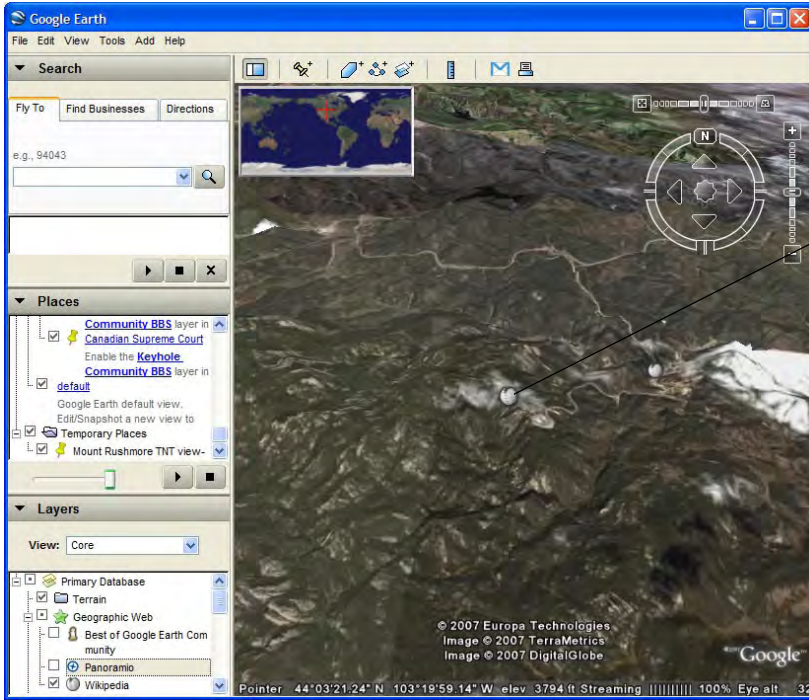


Google Earth (below) was opened to the same extents shown in the Display View window (left), which shows the boundary of Mount Rushmore National Park amid the surrounding Badlands.

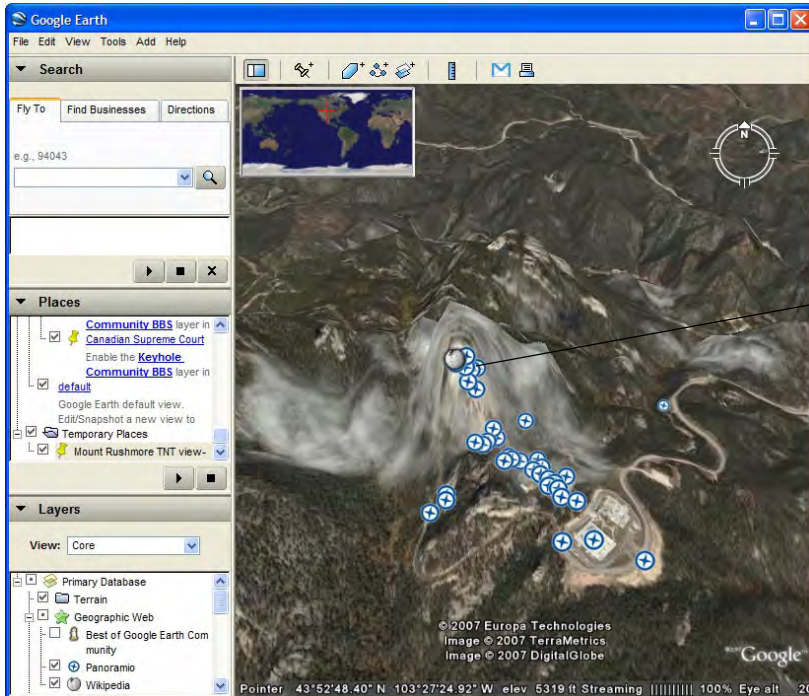


Use the graphic tools in Google Earth to zoom and tilt the view as desired. You can also rename the view-mark created from its default "TNT view-mark," as shown (left) using a right-click menu choice.

The Wikipedia links (under Layers/Geographic Web) are shown below for the area zoomed to match the view in TNT. Clicking on the central link opens the information on the right about Mount Rushmore.



The Panoramio links (also under Layers/Geographic Web) for the area in the TNT view after zooming are turned on in the illustration below. One of these links is shown at the right.



Panoramio



Mount Rushmore

2 Km from Keystone, South Dakota (United States)

[Upload your photos to Panoramio.com »](#) [Comment it](#)

