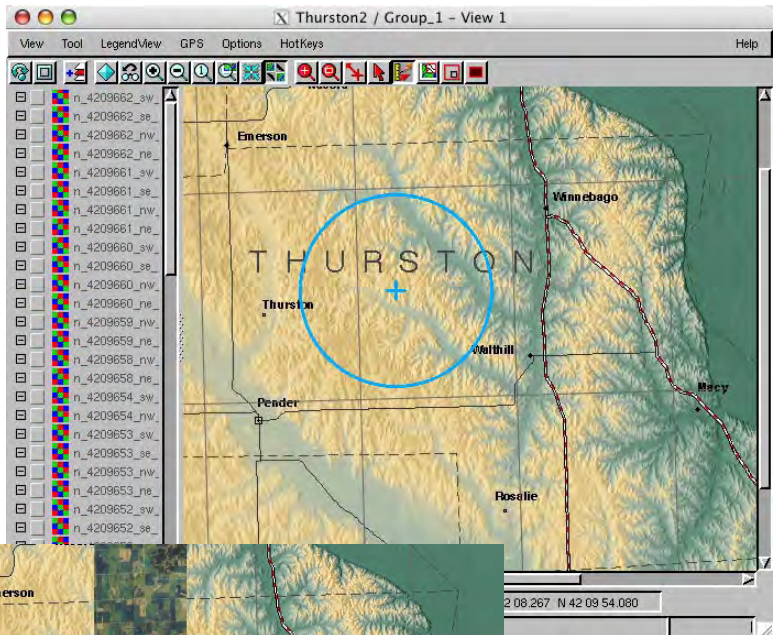


Show/Hide Areas of Interest

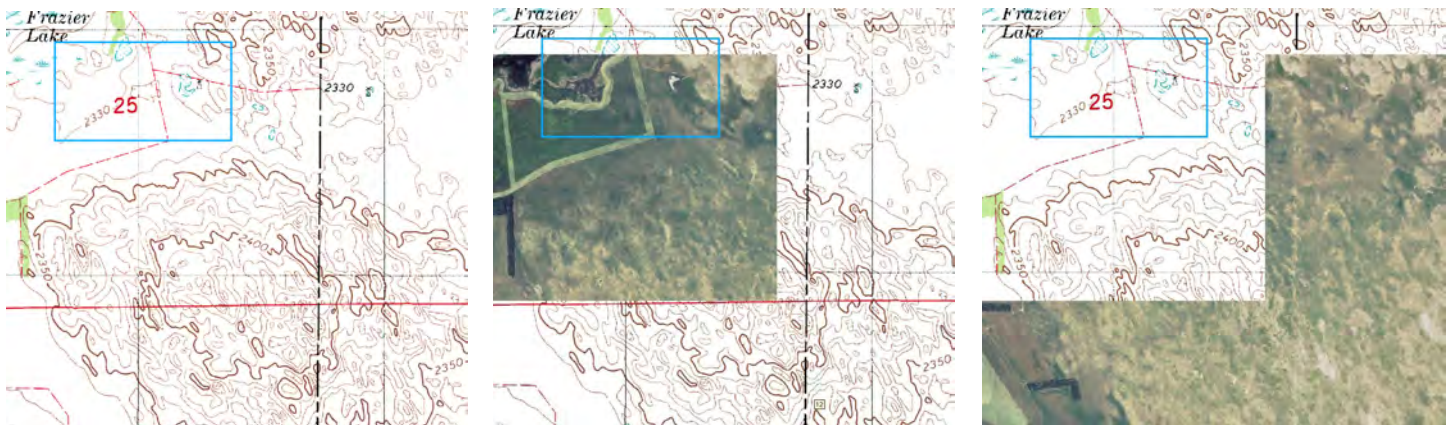
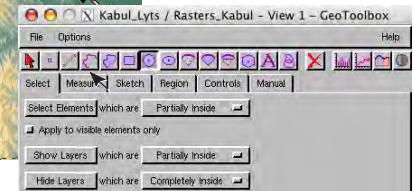
Layouts can be complex assemblies of many overlapping layers that cover part or all of the extents of the layers as a whole. These layers may turn on and off by map scale or you may need to hide/show layers to reveal the layers of interest in the group or layout. Layers can be individually hidden/shown using the toggles in the Layout or Group Controls windows or in LegendView. It may be difficult to determine by layer name which layers you want to turn on/off in a complex layout, such as that shown at the right with many color orthoimage layers that you would need to recognize by quarter quad number to identify the layers you wanted to turn on/off in the absence of a graphic tool to choose which layers to show/hide.

The graphic tools let you turn layers on/off by area using the options on the Select panel of the GeoToolbox. This feature is available when you use any of the area tools (polygon, rectangle, circle, ellipse, arc wedge, arc chord, regular polygon, or region) to draw a shape. The options for showing/hiding are the same as the options for selecting elements with an area tool: partially inside, completely inside, partially outside, and completely outside. Clicking on the Show Layers or Hide Layers button shows/hides all the layers that fit the selected criterion.

This functionality is also implemented for rectangular areas in a sample Tool Script, which is discussed on the color plate entitled *Sample Tool Script: Control Display by Areas of Interest*.



Using Show Layers Partially Inside turns on seven Digital Ortho Quarter Quad (DOQQ) layers, which fall completely or partially within the circle drawn.



A topographic map is displayed with a number of airphotos of the same area initially hidden (above left). Clicking on Show Layers with the option menu set to Partially Inside gives the result shown in the center. From the initial starting point, clicking on Show Layers with the option menu set to Completely Outside gives the result shown at the right.