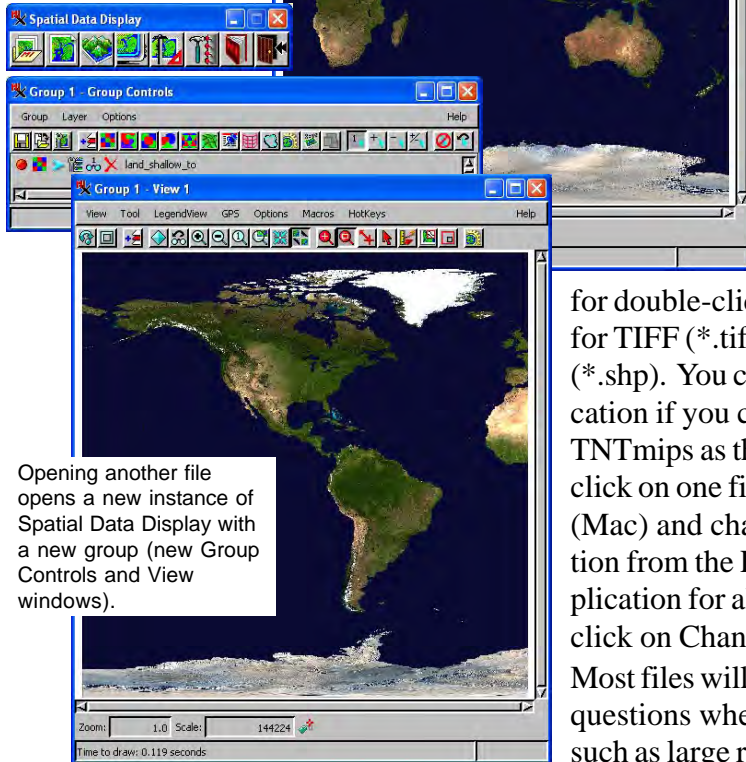


System

AutoOpen External Spatial Data Files



Note: TNTmips 7.1 is also available at the top of the first menu cascade in Windows. Using TNTmips to open supported files in external formats opens three windows: the Spatial Data Display toolbar, the Group Controls window, and a Group View.



Opening another file opens a new instance of Spatial Data Display with a new group (new Group Controls and View windows).

The TNT products open files from the desktop in all formats that are supported for direct display and other uses (see back of this page). You can use either of the two methods available: double-click on the icon for the file you want to view or click on the file and choose *Open With* TNTmips. Either of these selections launches Spatial Data Display and opens a new View in the Spatial Data Display process with the file you selected. Selecting a second file opens another instance of Spatial Data Display and another new View. Installing TNTmips is all you have to do for TNTmips to be a choice on the *Open With* menu for Windows and Mac OS X.

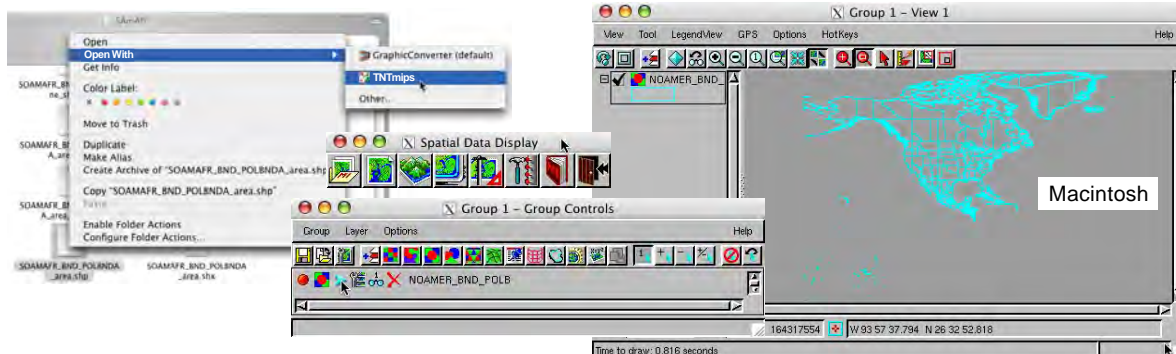
Once you have opened the Spatial Data Display process in this fashion, you can use the Group Controls to add additional layers to a view just as when Display is opened from within TNTmips. Thus, you can open a file in an external format that you want to use as a reference layer, zoom in to an area of interest, then add additional layers that are too dense for reasonable display at full view. As long as the extents of the added layers fall completely within the first layer opened, the View will remain at the same position and scale.

The double-click opening method requires that TNTmips be assigned as the default application for opening files of the selected type. Many files on your machine that can be directly used by the TNT products may already have a different default application assigned

for double-click opening, such as Adobe Photoshop or Apple Preview for TIFF (*.tif) and JPEG (*.jpg) files or ESRI ArcView for shapefiles (*.shp). You can still open these files in their originally assigned application if you choose *Open With* instead of double-clicking. To assign TNTmips as the default application for all files of the same type, right-click on one file of that type, choose Properties (Windows) or Get Info (Mac) and change the *Open With* application. Changing the application from the Properties window in Windows changes the opening application for all files of the same type. To set it for all files on the Mac, click on Change All in the *Open With* panel of the Info window.

Most files will display automatically but you may be asked one or more questions when opening a file if there are auto-link issues to resolve, such as large rasters not pyramided, styles not found, or the inability to

determine the coordinate reference system. For more information on these prompts, see the color plate entitled *Resolving Auto-Link Issues*.



These Geodata Files AutoOpen

| format | extension | description |
|----------------|-----------|--|
| Raster | | |
| TIFF | *.tif | Tagged Image File Format, developed by Aldus and Microsoft, copyright now held by Adobe Systems |
| GeoTIFF | *.tif | an effort by over 160 different remote sensing, GIS, cartographic, and surveying-related companies and organizations to establish a TIFF-based interchange format for georeferenced raster imagery |
| JPEG2000 | *.jp2 | Part 1 compliant files supported, may contain georeference as internal metadata, uses wavelet compression developed by LuraTech and others |
| JPEG | *.jpg | Joint Photographic Experts Group |
| PNG | *.png | Portable Network Graphics |
| MrSID | *.sid | LizardTech proprietary wavelet compression format |
| ECW | *.ecw | Earth Resources Mapping proprietary wavelet compression format, georeference may be in *.tab file |
| Shape | | |
| shapefile | *.shp | ESRI format, may have internal georeference |
| Oracle Spatial | | Oracle Spatial is not a file based format, select by table |
| CAD | | |
| DGN | *.dgn | Intergraph Microstation format, internal georeference |
| TAB | *.tab | MapInfo format, internal georeference |
| DXF | *.dxf | AutoCAD Drawing eXchange Format |
| DWG | *.dwg | AutoCAD Drawing format |

