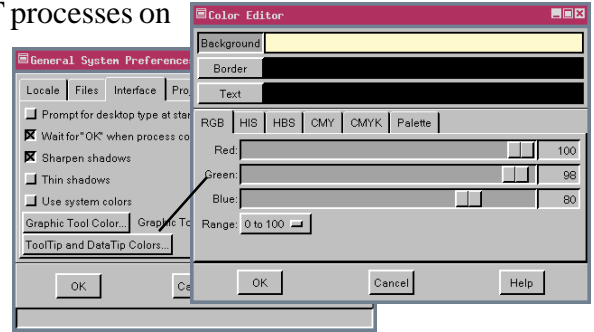
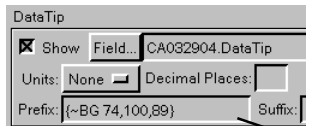


Setting DataTip Background Color

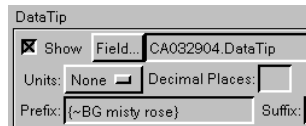
You can change the color used for DataTips and ToolTips in all TNT processes on the Interface tabbed panel of the General System Preferences window (Support/Setup/Preferences). You can also independently change the color of the DataTip and ToolTip text and borders. Your settings can be transferred to a distributed atlas by copying the [INTERFACE] section from your tntproc.ini file (see the color plate entitled *Greater Control Over TNT Atlas Startup*). The default DataTip background color in the TNT products is lemon chiffon or 100,98,80.



You can additionally change the background color of a DataTip for an individual layer by adding a text formatting control code, specifically {~BG}, and color specification to the DataTip prefix entered in the Layer Controls window or by including the control code and color specification in the



A multiline DataTip specified in a virtual field is shown for a single parcels layer. The DataTip background color could be specified in the script for the virtual field, but here (above and below) is shown in the prefix field for the DataTip in the Layer Controls. If you may be changing background color, it is quicker (fewer mouse clicks) to specify it in the DataTip prefix than as part of the virtual field script.



script for a virtual field that provides the DataTip for a layer. Colors can be specified by name if the color is in the color lookup file used by the TNT products (rgb.txt) or by percentage of each color component in RGB order. The illustrations at the left show the DataTip set on the Polygon tabbed panel of the Vector Layer Controls window for the parcel outline vector object described on the color plate entitled *Property Viewer Atlas for Lincoln, NE*.

See the color plate entitled *Add Styling to DataTips* for a list of the other text formatting control codes. Background color changes for GraphTips are handled in a different fashion, which is shown on the same color plate.

If multiple layers have the DataTip background color set, the color specified for the first (highest) layer showing in the current DataTip that specifies a background color is used. This usage means your DataTip background color can change dynamically with mouse position if a different layer becomes the first listed in the DataTip when the mouse is moved. The DataTip background color can also change with map scale if layers come and go as map scale changes and you have the DataTip viewing option set to Visible Layers rather than All Layers.



The changing DataTip color in the three illustrations above is controlled by position and map scale. The DataTip viewing option is set to Visible Layers for this complex layout. At Full View (a portion of which is shown above, left) the DataTip color set in your General System Preferences is used. When zoomed in so that populated places and hydrology show (two layers that have background color specified in the DataTip prefix), the position of the mouse determines the contents of the DataTip and its background color. The populated places layer is above the hydrology layer and, thus, controls the color of the DataTip when both appear (above, center) while the hydrology layer controls the color if not near a populated place. The background is the default color if neither type of feature is included in the DataTip because they are not near the cursor.