

Converting Symbols to/from Shapefiles

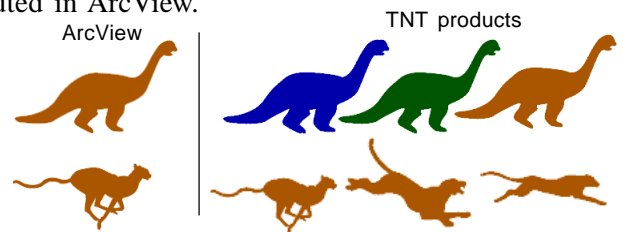
The TNT products let you create symbols that include any combination of points, lines, polygons, and text (including TrueType) using the standard drawing tools provided with TNTmips. You can also create a symbol directly from a selected CAD object or CGM file. Shapefiles do not support the majority of these TNT symbol types. If you want to create point symbols for export to shapefiles that will appear as they do in the TNT products, you need to restrict symbol design to adding a glyph from a TrueType font using the text tool in the Symbol Editor. The other methods of inserting a TrueType glyph into a symbol available in the TNT products convert the glyph from text into polygons so they can be edited but are not usable as shapefile symbols.

In order to create symbols in TNTmips that will export to shapefiles as designed, you must:

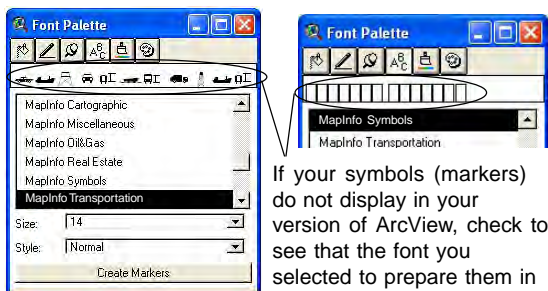
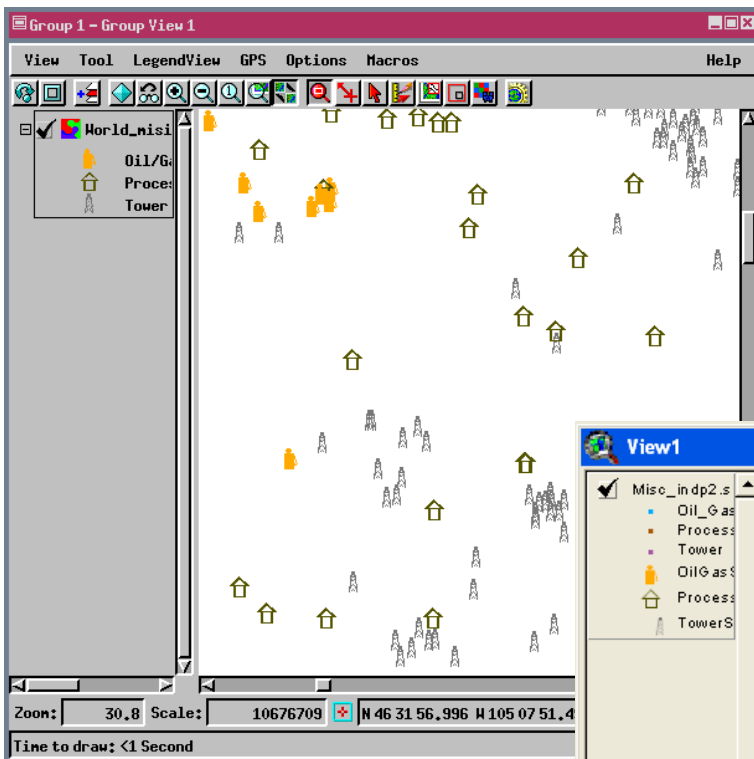
- make sure the font you are using in TNTmips is available for use in ArcView,
- use only the Add Text method for creating symbols from TrueType fonts.

ESRI's shapefile requirement that symbols be TrueType glyphs does not restrict you to alphanumeric symbols—many symbol fonts are available. Be sure to choose a font supported by ESRI as not all TrueType fonts display correctly in the ArcView Font Palette. If your symbol comes from a TrueType font that is not supported (as at the bottom left of the page), your points are not represented by symbols in ArcView.

If your symbols were created with any of the symbol editing tools in TNTmips other than Add Text, a standard symbol (such as a circle or rectangle) will be substituted in ArcView.



Although multiple glyphs (the same or different) can be incorporated in a single symbol [either placed separately in one or more colors (top above) or as a single text string (bottom above)] in a single color in TNTmips, only one of them appears in ArcView after export.



If your symbols (markers) do not display in your version of ArcView, check to see that the font you selected to prepare them in TNT is correctly interpreted by ArcView.

The font shown on the right displays properly in the TNT products but produces no symbols in ArcView and should not be used. These tests were done with ArcView GIS Version 3.1.

