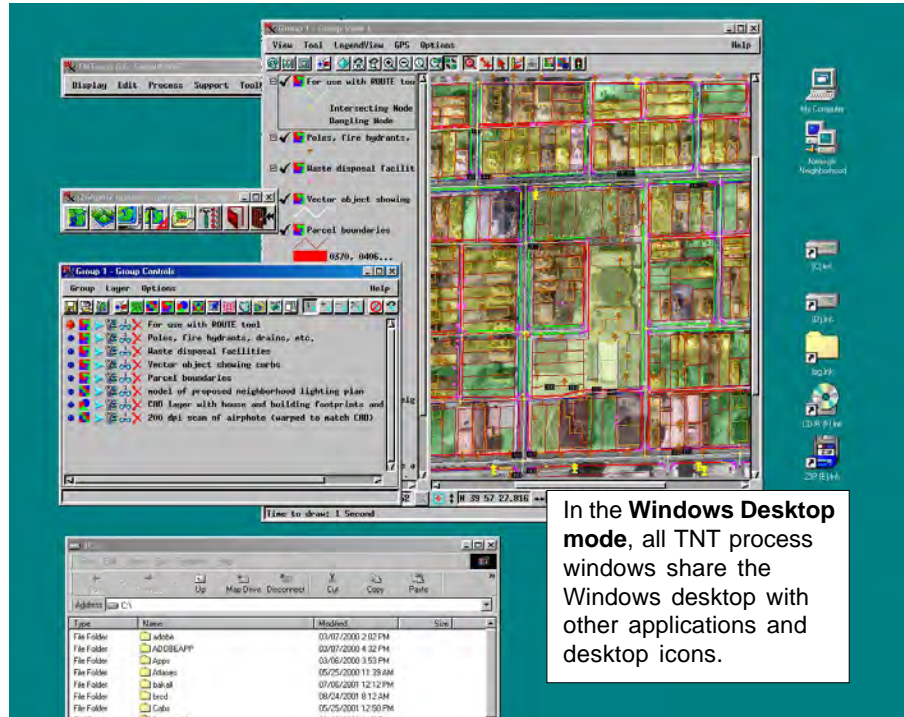


Windows Desktop or the X Desktop

V6.70 now provides a choice in the appearance of your TNT workspace under Microsoft Windows. By default, TNT operates on the familiar **Microsoft Windows desktop** where every window opened by any TNT product appears as a separate window along with the desktop icons and other windows opened by other applications. These TNT windows open, close, resize, reposition, and behave like any other Microsoft windows; it is no longer apparent that the Microimages X server is managing them. You also still have the option of using the familiar **X desktop** which operates inside a single virtual workspace where you can organize all your process windows, and focus your attention on your geospatial activities.

Windows Desktop

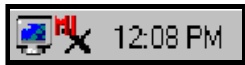
The default when you install V6.70 is to preserve your Microsoft Windows desktop. Previous versions of the TNT products always used the X virtual desktop. New MicroImages clients who start a TNT product now see their normal Windows desktop and use familiar techniques to manage their windows and processes.



In the **Windows Desktop mode**, all TNT process windows share the Windows desktop with other applications and desktop icons.



The **Interface Type** dialog appears at startup so you can choose which desktop interface you want.

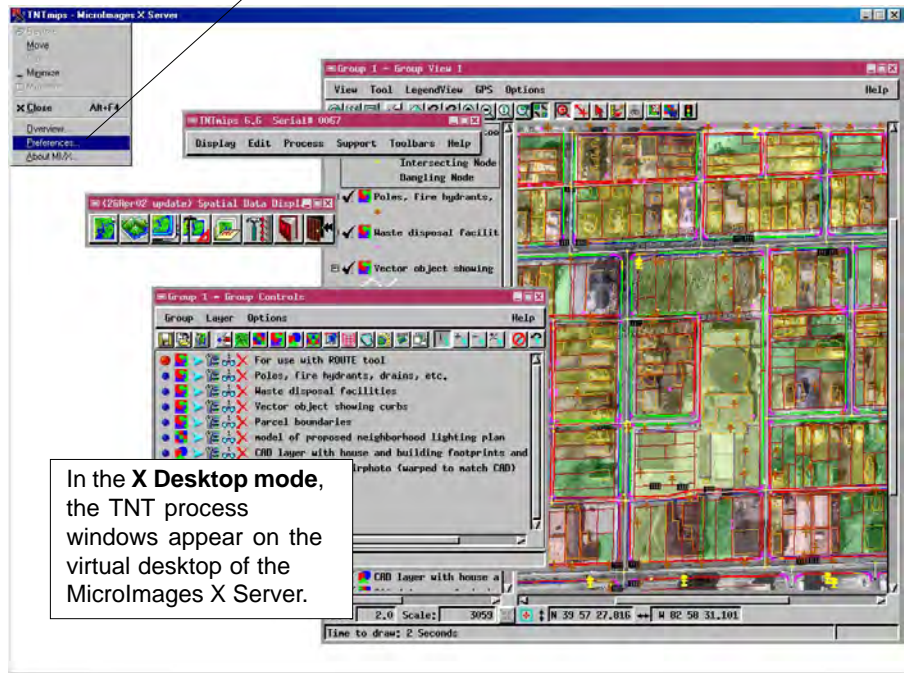


To set preferences, open the **MicroImages X Server Preferences** dialog either by selecting Preferences... from the MI/X process icon menu, or by clicking the MI/X icon in the Windows System Tray.

X Desktop

Those who prefer to work with TNT's unique large, virtual, preemptive desktop and X windows can still do so. You simply need to change back to the X desktop mode after installing V6.70.

You can switch back and forth between these interface modes in the Interface Type dialog that opens at startup.



In the **X Desktop mode**, the TNT process windows appear on the virtual desktop of the MicroImages X Server.