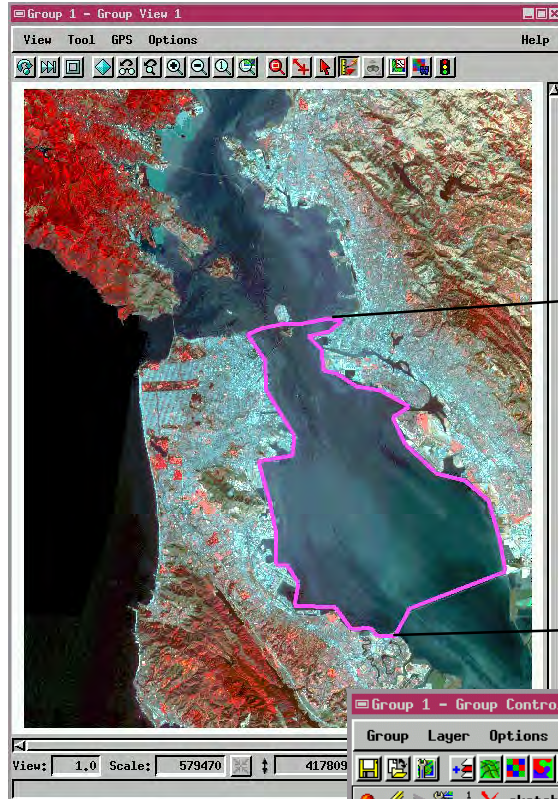
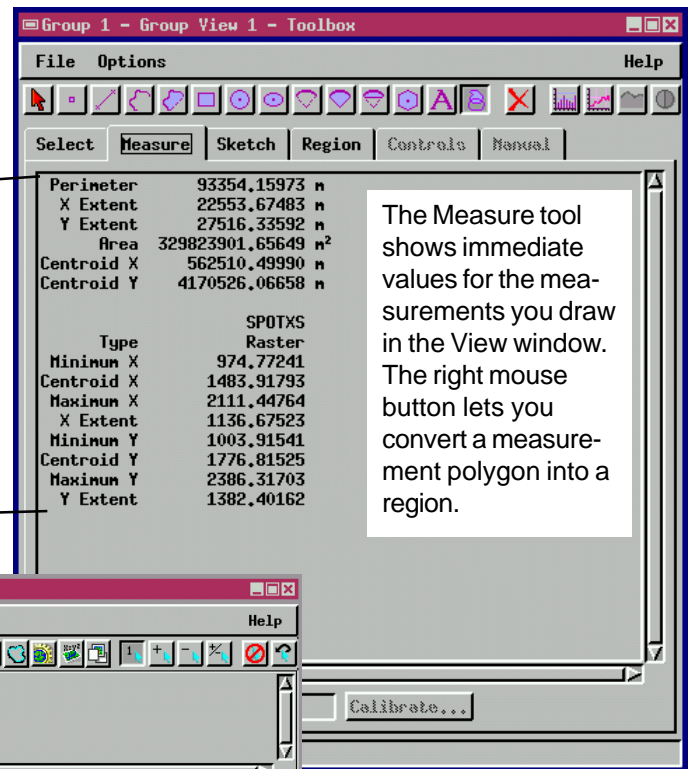


Toolbox Measurements and Regions

A new Toolbox icon in the standard View window introduces new tools and consolidates many features previously located elsewhere in the display process. Click the Toolbox icon in any View window to open the toolbox window for selection, measuring, sketching, region controls, GPS input, profiles, cross-sections and histogram views.



An icon row in the Toolbox window lets you select the tool you want. Tabbed panels give you access to specific tool features and parameter settings.



The Measure tool shows immediate values for the measurements you draw in the View window. The right mouse button lets you convert a measurement polygon into a region.



The Sketch tool creates a layer you can manipulate in the Group Controls window.



Element Selection. Click on an element in the View window to select it to see its properties or use it in other manipulations.



Histogram. Open a window to see a histogram for raster values for the entire object or for selected regions.



Sketch and Measure. All of the line and shape drawing tools are available for creating elements in a sketch layer, measuring features, and drawing regions.



Profile. Open a window to see a graphic profile of raster cell values for the active line or polygon in the View window.



Delete Element. Click on a measurement, sketch element, or region and remove it from the View.



Cross-section. Open a window to see a graphic cross-section for raster cell values for the active line or polygon in the View window.



Regions. Draw, edit, and manage region elements. Save regions in a Project File for use in other TNT processes.

The Toolbox is available wherever the standard View window appears throughout the TNT visualization, display, and editing processes.