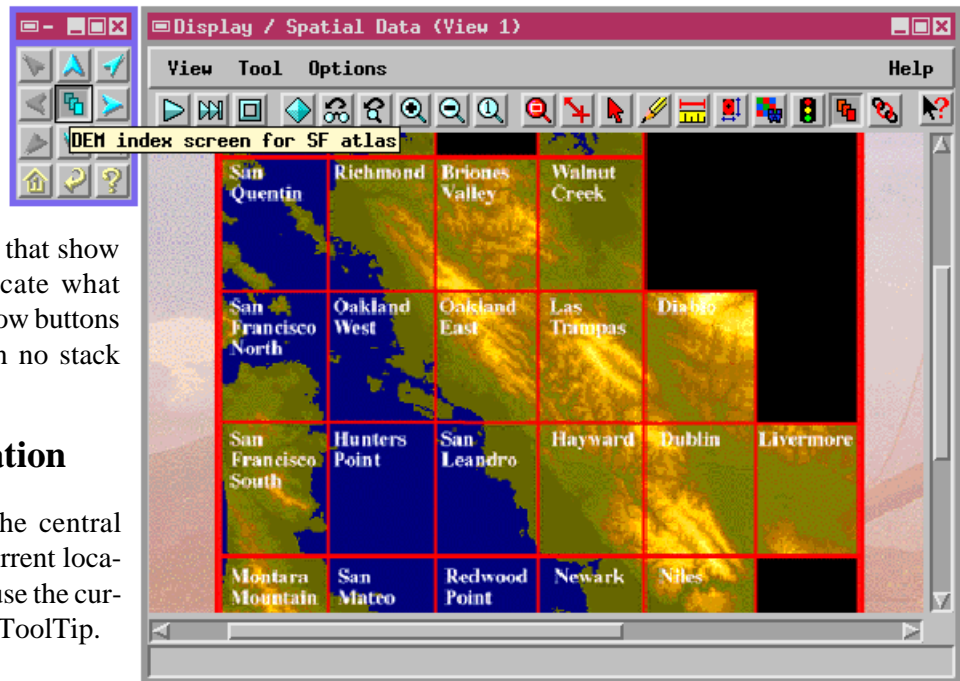


HyperIndex Navigator Update

The TNT HyperIndex Navigator window presents directional buttons for quick navigation through the spatially related materials in a HyperIndex stack. New in V5.5 are ToolTips and drop down menus that show your current location and indicate what stack materials are available. Arrow buttons are automatically inactive when no stack materials lie in their direction.

Determining Your Location

The ToolTip associated with the central navigator icon identifies your current location in the HyperIndex stack. Pause the cursor over the icon to activate the ToolTip.



Each active arrow has a **drop down menu** that contains the names of all objects in the stack that lie in that direction. Click the right mouse button over an arrow to open its list.

DLG index screen for SF atlas

Each active arrow has a **ToolTip** that identifies the nearest object that lies in that direction. Click the left mouse button to move to that object in the stack.

DLG index screen for SF atlas
 TIGER counties index screen for SF atlas
 DEM index screen for SF atlas
 1:1M map sheet for SF atlas map index
 Digital Chart of the World index screen for SF atlas
 SPOT XS 20meter from 15 october 1992

Drag the cursor along the drop down menu and release the mouse button the selection highlight is on the object you want.

Moving Through the Stack

If more than one object lies in a direction, then simply clicking the left mouse button on the arrow takes you to the closest neighboring object. You can see an entire list of object to select from by pressing the right mouse button over an arrow

