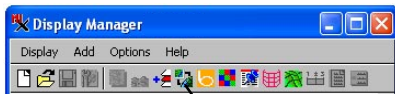


# Add Internet Tilesets to View

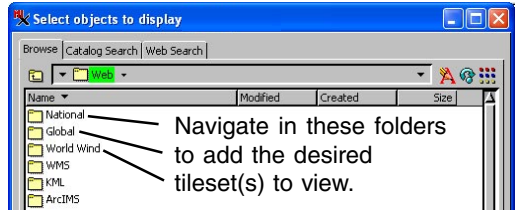
***DID YOU KNOW . . .*** you can select tileset layers from the Internet for viewing alone or in combination with local map and image layers?

## What Adding Internet Tilesets to View Gives You

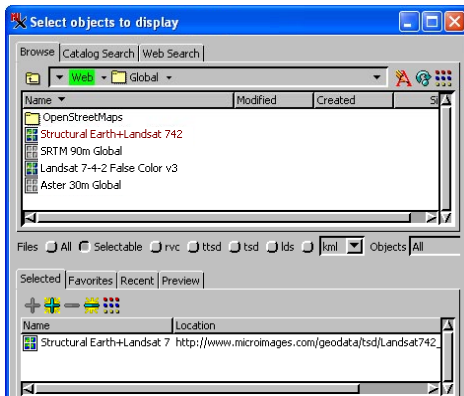
- Add reference layers for georeferencing, tracing features, editing geometric layers
- Add maps and images from TNT's list of reference tilesets
- Use a tileset by pasting in its web URL
- Use recent list to reselect previously viewed tilesets
- Add a tileset to your own favorites list



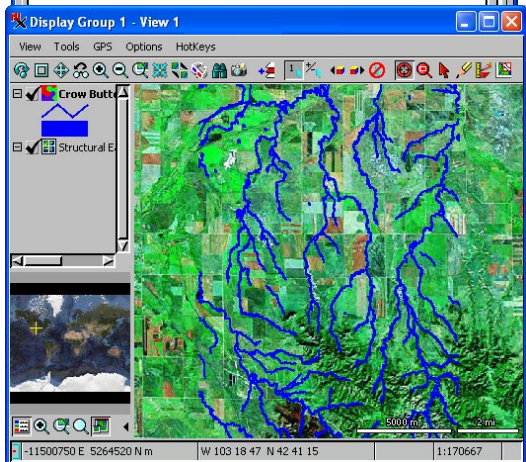
Opens *Select objects to display* window showing default web location.



Navigate in these folders to add the desired tileset(s) to view.



The illustration above shows selection of a Google Maps global tileset (shown at right) from MicroImages' list of tilesets.



The illustration above shows a local vector layer displayed over the Landsat 742 tileset.

## How to Add Internet Tilesets to View

- Click on the *Add Web Layer* icon.
- Choose the desired tileset layer in the *Select objects to display* window.
- Click on the *Add* button and then on the *OK* button; or
- Click on the *Enter Path/URL* icon in the *Select objects to display* window.
- Directly enter or paste the URL for a known TSD file into the URL field.
- Press <Enter> on the keyboard, then click on the *OK* button.

## WANT TO KNOW MORE?

See the *Technical Guide* entitled *Spatial Display*:

## Adding Tilesets to Your View

