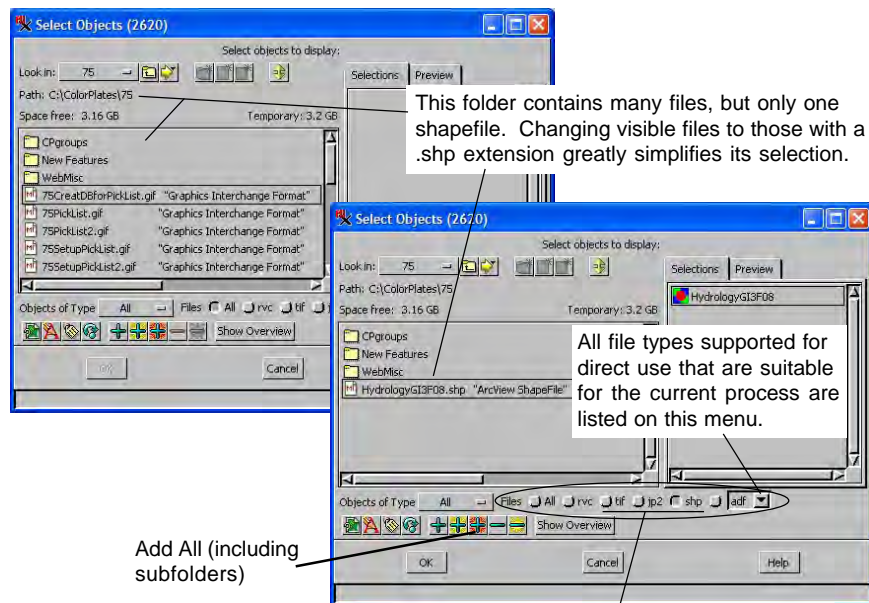


Filter File Type when Selecting Geodata

DID YOU KNOW . . . you can restrict browsing or use of your geocatalog(s) to a particular geodata file type?

What Restricting File Types Gives You

- Reduce number of files listed for selection when browsing your drives
- Easy selection of all files of one type in a folder or subfolder
- Reduce number of files listed after geocatalog searches
- Switch between different file types to view selectable files
- Different file types offered for selection depending on current process
- View all or restricted file types allowed for selection in current process



These choices reflect your most recently used file types if they are suitable for the current process.

How to Restrict File Types

- Open *Select Objects* or *Select File* window to choose input for any process.
- Choose file type from toggles provided for most recently selected file types.
- Choose desired file type from option menu.
- Restrict object types shown in RVC files by setting *Objects of Type* option.

WANT TO KNOW MORE?

See the Technical Guide entitled System:

File Type Selection Options

