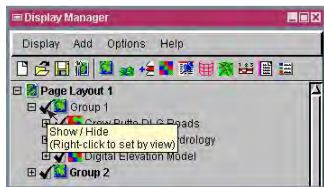


Control Visibility of Layers and Groups

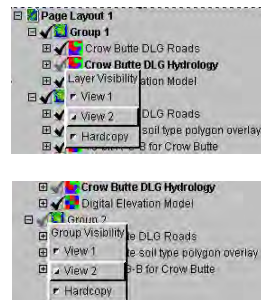
DID YOU KNOW . . . you can control the visibility of layers and groups in hardcopy layouts and group display views?

What Controlling Visibility of Layers and Groups Gives You

- Choose to Hide/Show layers and groups in hardcopy layout views and prints
- Choose to Hide/Show layers in display group views when multiple views are open
- Set different layer or group visibility for hardcopy and its layout view(s)

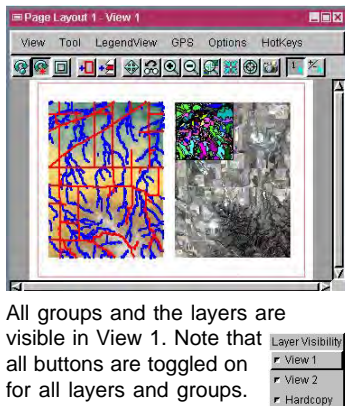


When the mouse is paused over a hide/show checkbox of a group or layer in a hardcopy layout, a ToolTip is activated as shown above. In display groups and display layouts, the ToolTip does not include the right-click information unless multiple views are open.

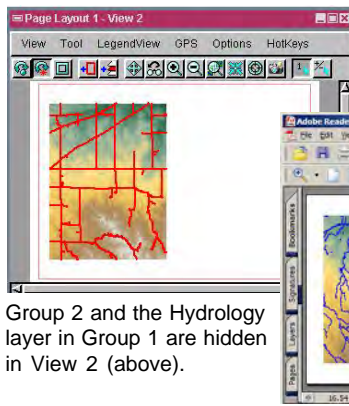


Right-clicking on a hide/show checkbox opens the Group Visibility (or the Layer Visibility) menu that lets you set the visibility of the group (or layer) in the open views and hardcopy.

In the illustration above, toggling off the View 2 button hides Group 2 in View 2 (below) and the check is dimmed.

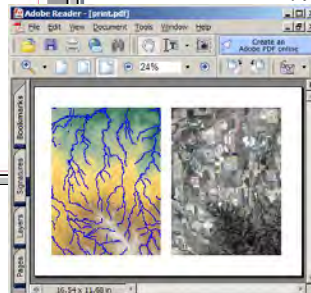


All groups and the layers are visible in View 1. Note that all buttons are toggled on for all layers and groups.



Group 2 and the Hydrology layer in Group 1 are hidden in View 2 (above).

The Roads layer in Group 1 and the Soils layer in Group 2 are hidden in the hardcopy.



How to Control the Visibility of Layers

- Open a saved layout or create a new one.
- Right-click on the checkbox for a group or layer.
- Toggle off the view and/or the hardcopy buttons in the group or layer visibility list to hide the group or the layer in these views and/or the hardcopy.



WANT TO KNOW MORE?

See the Technical Guide entitled:
View Toolbar Features

