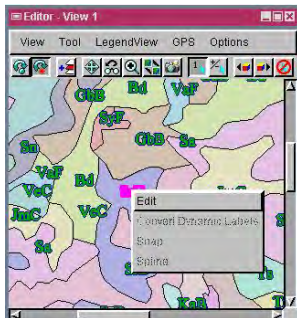


Apply Label Style Changes

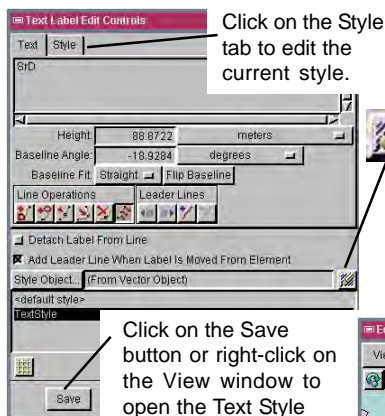
DID YOU KNOW . . . you can interactively edit a single label and apply changes to only that label or to all labels of the same style?

What Applying Label Style Changes Gives You

- Change style of one label and apply the changes to the other labels
- Save style changes as a new style or change the current style
- Change text size with mouse or with Style Editor



Select Edit from the menu to resize and/or rotate the label u with mouse or using Text Label Edit Controls window.

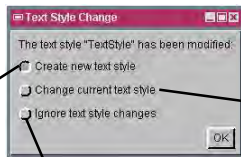


Click on the Style tab to edit the current style.

Click on the Edit Style icon to open the Style Editor to edit the current style or create new styles.

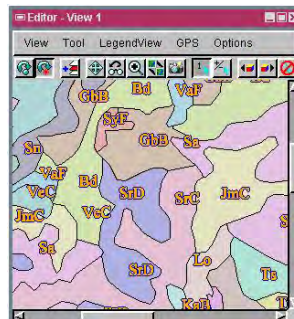
Click on the Save button or right-click on the View window to open the Text Style Change window.

Toggle on this button to create a new text style, which applies only to the selected label.



Toggle on this button if you do not want to apply the style changes.

Toggle on this button to change current text style, which applies to all labels of the same style.



In this example, the current text style was changed by editing a single label. The changes were applied to all labels of this style.

How to Apply Label Style Changes

- Open the vector object to edit in the Editor.
- Right-click on a single label and select Edit from the right mouse button menu.
- Resize and/or reposition the label text with the mouse or using the Style Editor.
- Right-click in the View window or click on the Save button in the Text Label Edit Controls window to open the Text Style Change window.
- Toggle on the Create new text style button to apply changes to a single label, or toggle on the Change current text style button to apply the changes to all labels of the same style.

WANT TO KNOW MORE?

See the Technical Guide entitled: **Interactive Editing of Labels and Leader Lines**

