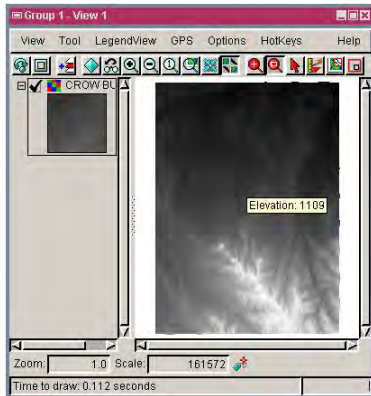


Interval Categories for Raster Objects

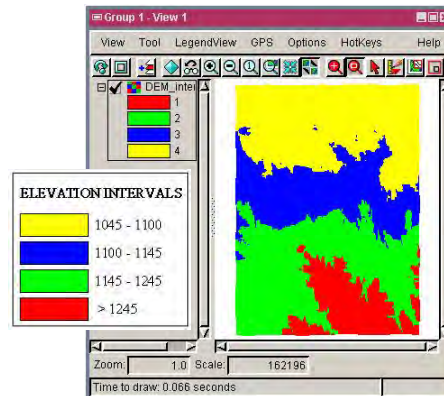
DID YOU KNOW . . . you can generate interval categories using the values of a raster object?

What the Interval Categories Give You

- Compute new cell values that correspond to various intervals
- Generate a new raster object composed of interval categories
- Specify intervals using GeoFormula tool



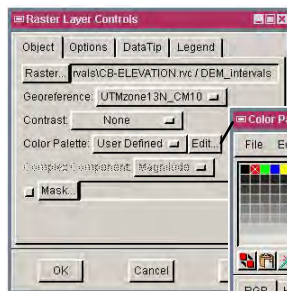
The 16-bit elevation raster is composed of values between 1045 and 1376.



The 8-bit elevation interval raster is composed of four interval categories.

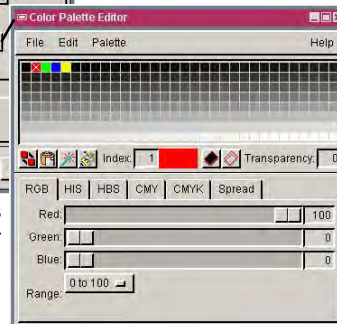


The Geospatial Formula lets you assign interval values.



The Edit button allows you to open the Color Palette Editor.

The Color Palette Editor lets you assign colors to each interval category.



How to Generate Interval Categories?

- Select Script/GeoFormula from the menubar.
- Use a script to assign raster values to interval categories.
- Open the new raster object in the Display process.
- Use Color Palette Editor to assign new colors to the intervals generated.

WANT TO KNOW MORE?

See the tutorial booklet:

Using Geospatial Formulas

