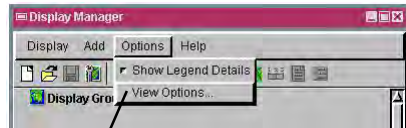


Geotrack Cursor in Multiple Views

DID YOU KNOW . . . you can track the mouse cursor between views as you move it in TNTmips?

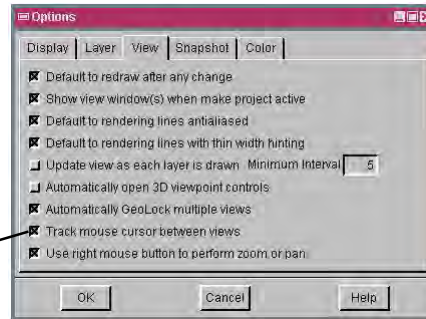
What Geotracking the Cursor in Multiple Views Gives You

- Compare features simultaneously from different views
- Detect a specific location's land use / cover changes over time
- Identify if raster and/or geometric objects have been correctly georeferenced

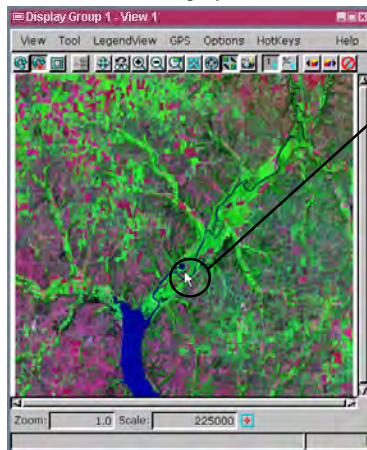


Select View Options to open the Options window.

Turn toggle on to get functionality.

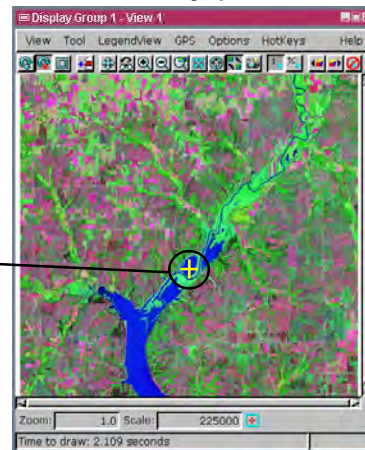


Landsat image year 1990



Move mouse cursor freely across the view.

Landsat image year 2000



A yellow crosshair appears at the same location as the mouse cursor in the other view.

How to Geotrack Cursor In Multiple Views

- Select View Options from the Options menu in the Display Manager window.
- Select the View tab in the Options window that opens.
- Turn on the "Track mouse cursor between views" toggle button.
- Open two or more View windows with data that shares geographic extents.



WANT TO KNOW MORE?

See the tutorial booklet:

Displaying Geospatial Data

