

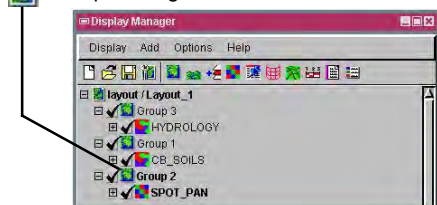
Geographically-Attached Group Clipping

DID YOU KNOW . . . you can clip groups using the extents of another group when two or more groups are geographically attached?

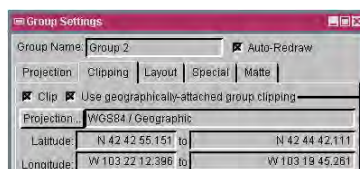
What Geographically-Attached Group Clipping Gives You

- Clip a group so that only a selected portion of it is shown in the View window
- Use full extents of the geographically attached group to define the clipping area
- Quick clipping without needing to define the clipping area manually

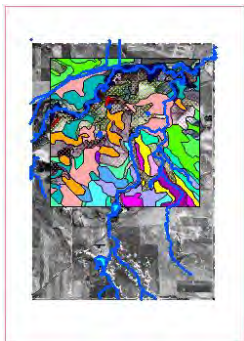
Group Settings icon



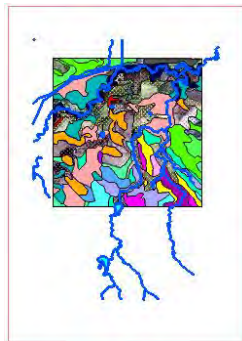
Group 2 and Group 3 are geographically attached to Group 1.



Toggling on this button allows you to use the Group 1's extents for clipping Group 2.



Group 1, Group 2, and Group 3 are displayed together without clipping.



Group 2 is clipped using the extents of Group 1, while Group 3 is not clipped.



Both Group 2 and Group 3 are clipped using the extents of Group 1.

How to Clip Geographically Attached Groups

- Click on the Group Settings icon to open the Group Settings window.
- Set Horizontal Attachment To one of the groups listed on the Layout panel.
- Select Geographic from the menu to attach the active group geographically.
- Turn on the Clip toggle on the Clipping panel.
- Turn on the Use geographically-attached group clipping toggle.

WANT TO KNOW MORE?

See the tutorial booklet:

Making Map Layouts

