

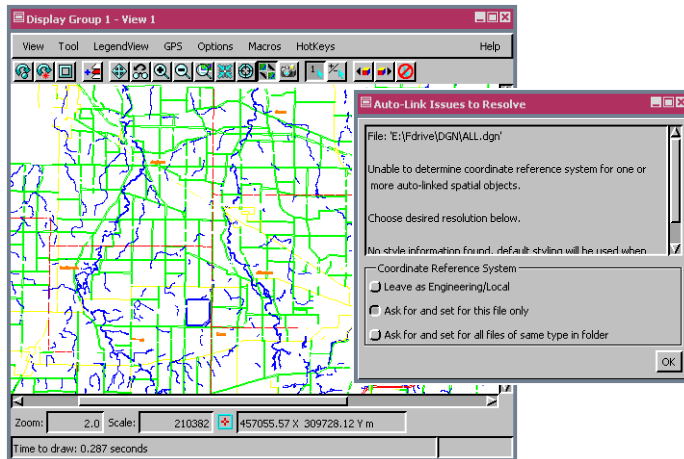
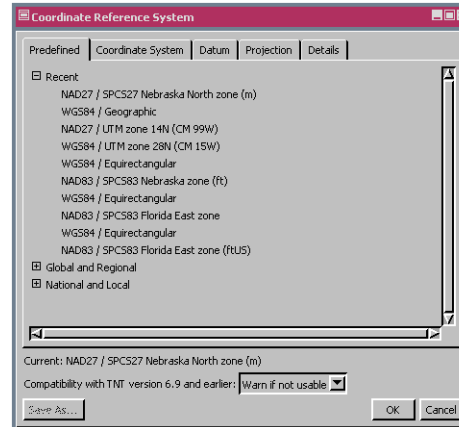
# Correct Coordinate Reference Systems

**DID YOU KNOW** . . . you can correct Coordinate Reference System (CRS) parameters that were entered incorrectly?

## What Correcting the Coordinate Reference System Gives You

- Change CRS without changing control point coordinates
- Change incorrect parameters chosen in the Georeference process
- Correct parameters incorrectly selected in the Import process
- Change CRS after auto-linking

After selecting one or more objects to change to the same CRS, the Coordinate Reference System window (right) opens so you can specify the correct CRS.



When you first display a file in an external format (for example DXF or DWG), you may not know the correct CRS. You can choose Leave as Engineering/Local so you can display the geodata, then use the Change Coordinate Reference System process to correct it when known.

## How to Correct Coordinate Reference Systems

- Choose *Tools/Change Coordinate Reference System*.
- Select the object(s) for which CRS parameters are incorrect.
- Choose the correct CRS parameters.

**WANT TO KNOW MORE?**

See the tutorial booklet entitled:

**Coordinate Reference Systems**

