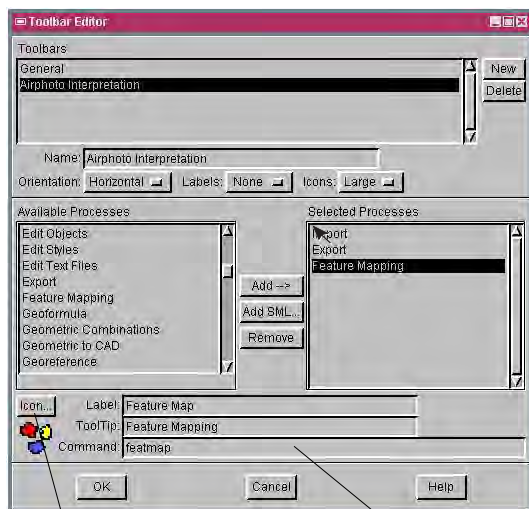


Custom Toolbars

DID YOU KNOW . . . you can make your own toolbars for instant access to any process on the menu?

What Custom Toolbars Give You

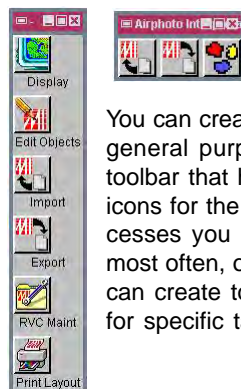
- Instant access to any TNTmips process
- Logical grouping of processes for specific tasks
- Eliminate menu path navigation



You can create any number of custom toolbars that launch TNTmips processes directly with a single click rather than from the menu.



The information below the Available and Selected Processes lists applies to the highlighted item in the Selected Processes list.



You can create a general purpose toolbar that has icons for the processes you use most often, or you can create toolbars for specific tasks.

How to Use Custom Toolbars

- Choose Tools/User Toolbars/Edit from the menubar.
- Click on New, name your toolbar, and specify style parameters.
- Add items from the list of available processes.
- Change the default icon if desired.
- Turn on the toggle for the toolbar on the User Toolbars menu.

WANT TO KNOW MORE?

Search the information available on

MicroImages' Web Site

