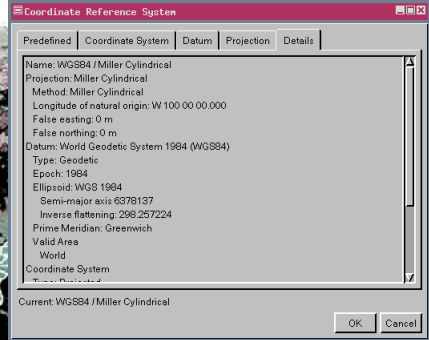
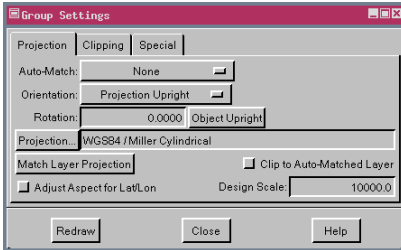


# Automatic Projection Reconciliation

**DID YOU KNOW . . .** the display process automatically warps all layers in a group to the new map projection you select?

## What Automatic Projection Reconciliation Gives You

- Minimize map distortions to suit your project material's content
- Match layers in a variety of projections to a reference map
- Present all layers in a view in a familiar projection
- Quickly preview projections for a printed map or atlas



A 9200 x 8250 AVHRR raster image of North America and a vector layer of U.S. states are viewed in three map projections.

## How Automatic Projection Reconciliation Works

- Add any number of georeferenced layers to a display group.
- Select Group/Projection/Clipping to open the Group Settings dialog.
- Set Auto-Match to None in the Group Settings option button.
- Click the Projection button in the Group Settings dialog.
- Choose System, Projection, and Parameters in the Coordinate System / Projection Parameters dialog.
- Click the Redraw button in the Group Settings dialog to view the reprojected results.

**WANT TO KNOW MORE?**

See the tutorial booklet:

**Introduction to Map Projections**

