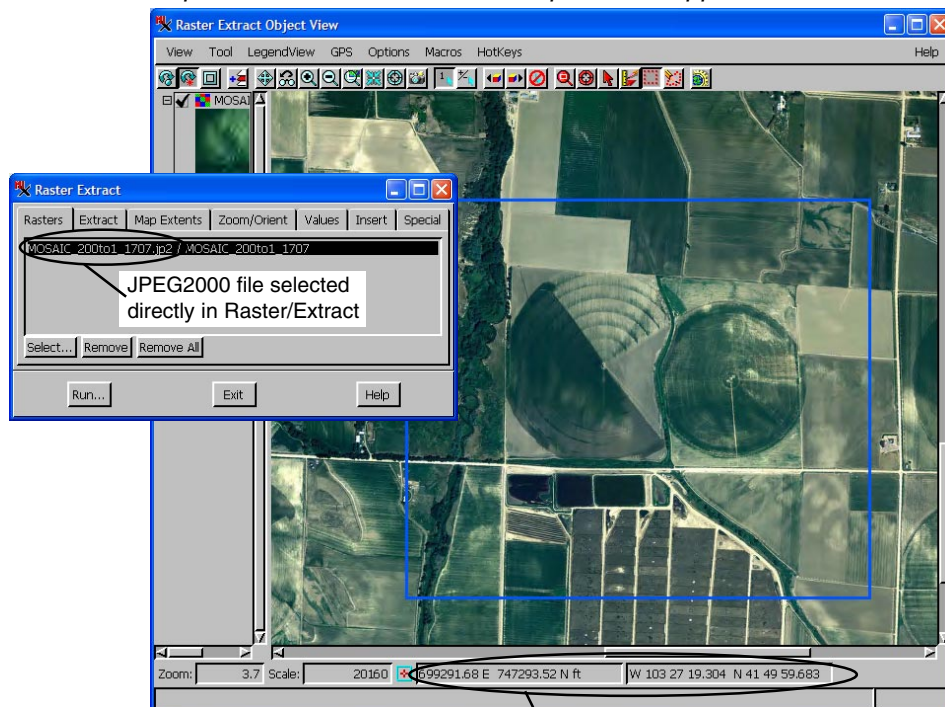


# Direct Use of JPEG2000 Files (\*.jp2)

**DID YOU KNOW** . . . you can directly display and use files with JPEG2000 compression in the TNT products?

## What Directly Using JPEG2000 Files Gives You

- Automatic display without importing files
- Fast display of large files
- Use as raster object wherever appropriate, such as in Mosaic or Extract (which means do not use lossy rasters in TNT automated analysis processes)
- Raster DataTips are available
- Open in TNTAtlas without importing
- Part 1 compliant files with JPEG2000 compression supported



JP2 files may contain georeference as internal metadata or may use a same-named world file (\*.j2w)

## How to Directly Use JPEG2000 Files

- Double-click on the file to open in a new 2D View.
- Use the Open With right-click option and select a TNT product.
- Browse to and select file in any TNT Select Objects dialog.

### WANT TO KNOW MORE?

See the booklet entitled:

**Sharing Geodata with Other Popular Products**

