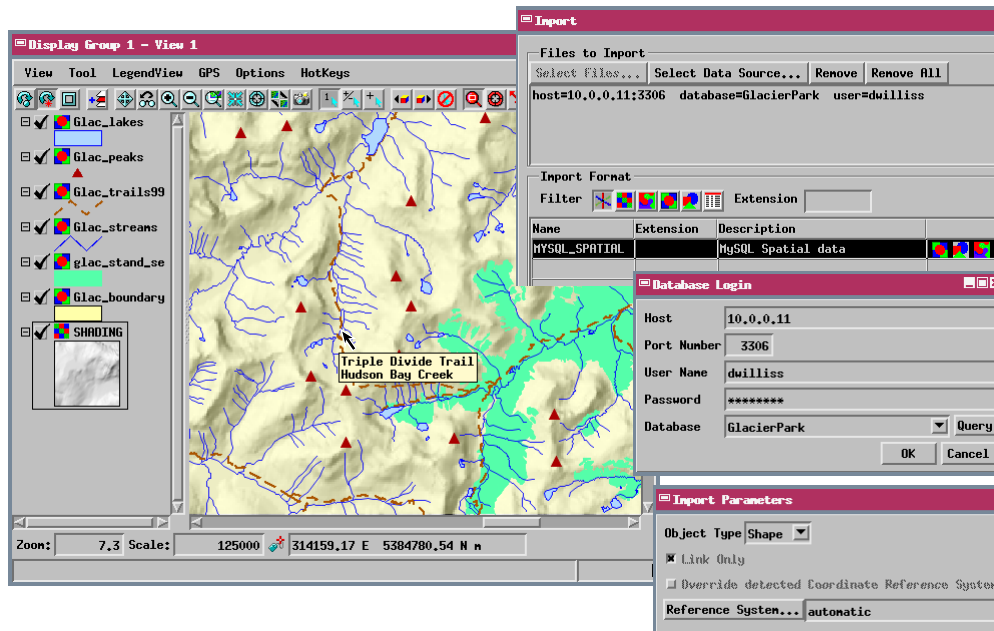


Link to MySQL Spatial Tables

DID YOU KNOW . . . you can link to spatial objects in MySQL spatial tables?

What Linking to MySQL Spatial Tables Gives You

- Maintain spatial data and attributes in a server-based relational database
- Point, line, and polygon geometries (one type per spatial table)
- Get a separate linked shape object for each spatial table
- Data transparently shared with other users and software
- Linked spatial data fully portable within the server network
- Database log in required only when first establishing the link
- Base element styling and DataTips on attributes in the linked spatial table



How to Link to MySQL Spatial Tables

- Choose the MySQL-Spatial format in the Import process.
- Press Select Data Source and log in to the desired database and schema.
- Press the Next button.
- Choose the Shape object type in the Import Parameters window.
- Press the Import button.
- Select the Project File and object names for the linked MySQL spatial tables.



WANT TO KNOW MORE?

See the tutorial booklet:
Importing Geodata

