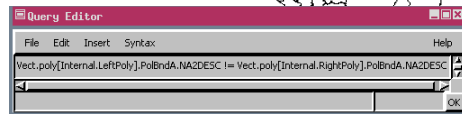
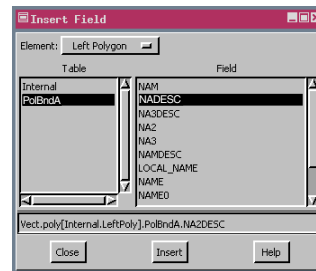
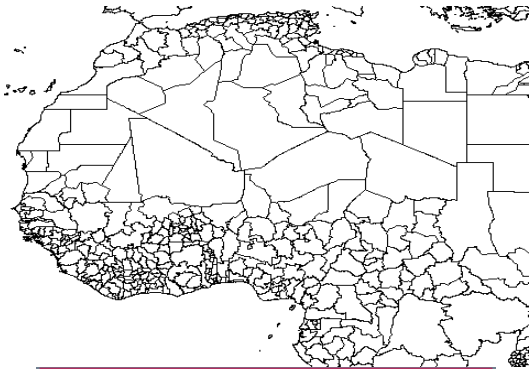


Use Polygon Attributes to Style Lines

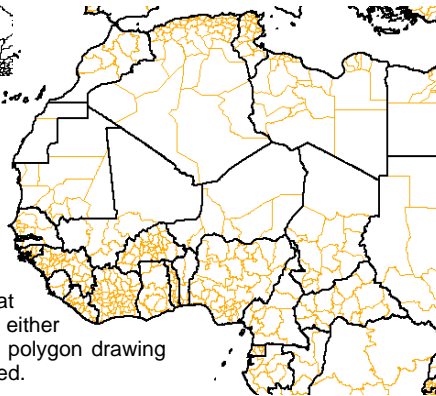
DID YOU KNOW . . . you can use *polygon attributes* to determine line drawing styles?

What Using Polygon Attributes to Style Lines Gives You

- Assisted query entry
- Compare left/right polygon attributes to select/style line
- Polygon dissolve for selection/styling



Wider lines for country borders enhance visualization of maps with state/province boundaries. In the illustration above, lines and polygons are drawn with all selected and an All Same drawing style. At the right, only the lines that have different country names for the polygons on either side are drawn using a wider drawing style. The polygon drawing color now shows because not all lines are selected.



How to Directly Use Polygon Attributes to Style Lines

- Open the *Vector Layer Controls* window
- Set line selection and/or styling to *By Query*, and click on *Specify*.
- Choose *Insert/Field* and set the *Element* option menu to *Left Polygon*.
- Select the table and field for the selection/styling of the lines.
- Click the *Insert* button.
- Add your comparison operator or other query components.
- Choose *Insert/Field* and set the *Element* option menu to *Right Polygon*.
- Select the table and field for selection/styling of the lines.
- Click the *Insert* button, then click *OK*.
- Change the style for query selected lines as necessary.

WANT TO KNOW MORE?

See the tutorial booklet entitled:
Creating and Using Styles



USE POLYGON ATTRIBUTES TO STYLE LINES

