

Tool Scripts

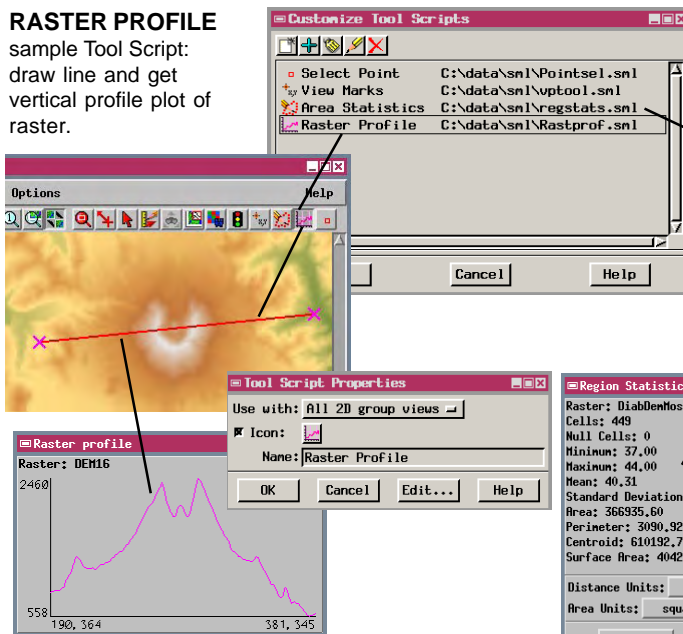
DID YOU KNOW . . . that SML Tool Scripts create graphic tools that interact with geodata in a View window?

What Tool Scripts Give You

- Execute script from an icon button on any View window toolbar
- Provide standard drawing tools to interact with geodata in the View window
- Use templates with skeletal function definitions and expand as needed
- Operate on objects in the View or objects covering the same geographic area
- Pass selected data to external programs

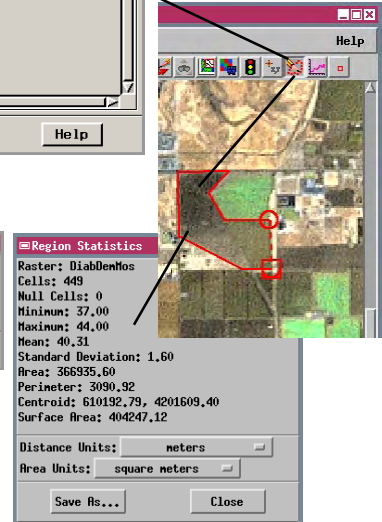
RASTER PROFILE

sample Tool Script:
draw line and get
vertical profile plot of
raster.



AREA STATISTICS

sample Tool Script:
draw polygon and
get raster statistics
for area.



How Tool Scripts Works

- Choose Options / Scripts / Tool Scripts from any View window.
- Press the Add icon button and select a script.
- Or to create a new script, press the New icon button to open the Query Editor window with the Tool Script template.
- Remove the comment characters (#) in the template to activate functions.
- Add your own function code to define the actions for the tool.
- The script icon button appears on the toolbar of all your TNT View windows.

WANT TO KNOW MORE?

See the tutorial booklet entitled:

Writing Scripts with SML

