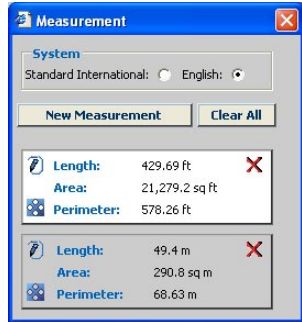
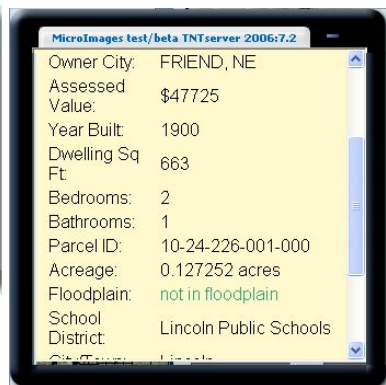


Recenter. The Recenter tool moves the position you click to the center of the view canvas without changing the scale of the layers in the view. Holding the shift key and clicking recenters the view on the location of your click in any of the zoom modes.

Measure. The Measure tool lets you make linear and area measurements by drawing over or around the features you want to measure. Click anywhere in the view canvas to start drawing. Details for each measurement you make appear in a separate Measurement window. The Measure tool is simple to use but has many features that are discussed in more detail in a following section.



Show Feature Info. When this tool is selected, clicking on the image in the view opens a window with information about the feature at the location clicked. The information provided is that set up for viewing as a DataTip in MicroImages' professional products. See the Quick Guide entitled Multiline DataTips for how to produce DataTips with more than one line for a given layer. Any links to files or other web sites for the location also appear in this window. If the link is a hierarchical link (to another layout), clicking on it will open an additional TNTmap Viewer window with the linked layout displayed. Links can also be followed with the Navigate tool, which only appears when links are present.



Navigate. This icon appears at the right of the toolbar *only* when MicroImages' special HyperIndex® links are available in an atlas. If the link is to other map and image data, a new instance of TNTmap Viewer is launched, which displays the linked map and image data when you click on the link. If the link is to a web site or an external file, the appropriate program is opened. If your browser blocks pop-ups, you will have to hold down the Ctrl key when you click so this new window can be opened.